



ANNUAL REPORT 2006

138 YEARS OF KINDNESS AND CARE FOR ANIMALS

mspca  **angell**
Kindness and Care for Animals®



COVER

Bullet enjoys life in his new home. Story page 12.

TOP

Oreo has claimed the role of a mother in her new home; helping to nurse another of her owners' cats back to health.

Daisy is a true member of her new family but still has trouble keeping her long ears out of her water bowl.

CEO Carter Luke's dog, Teddy, relaxes during a visit to the MSPCA-Angell Boston.

RIGHT

Cat adoptions increased by 52% with the opening of Boston's Copeland Animal Care and Adoption Center.

FAR RIGHT

Carter Luke and his cat, Lunar.

Dana Ramish and Ty from our adoption center.

Message from the CEO and the President

Looking back at 2006, we are proud to reflect on the accomplishments that you, our supporters, have helped us to achieve in significantly improving the lives of animals. We are grateful each day for the opportunity to partner with you and make a difference in animals' lives. The pages that follow summarize some of the specific achievements that your contributions have enabled as we work to provide kindness, care and compassion to over 250,000 animals each year. Your support has been the essential cornerstone of our success; the completion of our Boston expansion most notably in 2006. With the new Copeland Animal Care and Adoption Center, adoption rates have climbed 52% for cats, 25% for dogs and 43% overall. Animals now enjoy more comfortable, well-lit, roomy surroundings as they prepare for their forever homes. At the same time, from the moment you walk through the new entrance to the spacious waiting area of the Helen Schmidt Stanton Clinical Care Center, you can feel the vibrancy of our mission. The facility's transformation has made it possible to treat and care for even more animals, more effectively with improved space and technology. What has not changed is the unbridled passion of our staff and supporters that fuels this progress and our bright future.

Thanks to the generous time and financial resources of our advocates, we made a substantial impact on animals at risk in 2006. We promoted our mission to prevent cruelty and protect animals through our law enforcement, legislative and advocacy efforts. At the same time, we helped relieve their suffering and advance their health and welfare with the dedicated work of our adoption centers, hospitals and programs



outlined in this report. Animals like Holly, Ralph and Bullet featured within these pages have had their lives transformed from a state of physical pain, abuse and homelessness, to good health, joy and comfort in their new homes. You made this possible. They represent the positive power of the human-animal bond, having formed lasting new relationships with the new people in their lives. These stories affirm our mission and your unrelenting support in action.

We are honored to serve as CEO of the MSPCA-Angell and President of the Angell Animal Medical Centers and fortunate to partner with our committed donors, volunteers, staff and supporters. Together we have made exciting progress in 2006 and look forward to carrying this renewed energy and resolve into 2007 as we work hard to improve the health and welfare of animals. All of us at the MSPCA-Angell cannot thank you enough for your continued generosity. You

have allowed us to enhance our capabilities for advanced animal care and improve the services that we hold so very dear. We are certain that animals in all situations — those sick, abused or homeless and looking for a second chance or those part of a family and healthy — will also thank you for the care and respect that they are shown within the hearts of our staff and you, our friends and supporters.

Sincerely,

Handwritten signature of Carter Luke in blue ink.

Carter Luke, CEO

Handwritten signature of Dana Ramish in blue ink.

Dana Ramish, President

2006 Programs and Accomplishments

MSPCA ANIMAL CARE AND ADOPTION CENTERS

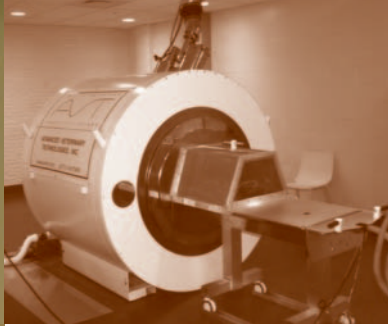
The Massachusetts Society for the Prevention of Cruelty to Animals' (MSPCA's) seven Animal Care and Adoption Centers (ACACs) grew in 2006 with renovations to the Boston facility that nearly quadrupled its size. As our facilities and programs expand, our dedicated ACAC staff continues to provide direct, hands-on care to the animals that come to us in need of new, permanent and loving homes. Our open-admission policy brings a wide variety of animals. In addition to the thousands of dogs and cats we saw last year, there was a definite increase in birds, rabbits and reptiles, as well as horses and farm animals. Thanks to our generous donors and hundreds of volunteers, our adoption center "residents" are provided with soft beds, soothing music and a variety of toys to help make their stay as comfortable as possible. The ACAC staff continues to be a valuable resource for the communities we serve by expanding our education programs for people of all ages and consistently providing information on responsible pet care and animal welfare issues. In 2006:

- 12,674 animals were placed into responsible and loving homes
- 7,700 people attended over 300 educational programs
- 1,050 people and their dogs attended 160 training classes
- 850 volunteers helped with the daily care of animals, special events and office work
- 320 foster homes cared for 3,099 animals not quite ready for adoption
- 160 children participated in the MSPCA Summer Camp at Nevins Farm in Methuen
- 39 special events were held by the ACACs, raising \$287,000

ANGELL ANIMAL MEDICAL CENTERS

Comprised of three Angell Animal Medical Centers, the not-for-profit Angell Network grew its capabilities to treat animals in need this year with the expansion of the Boston facility. Angell-Boston now includes 24-hour emergency service seven days a week and a spacious waiting area. We have also added dermatology to our growing list of services provided by board-certified doctors and renovated the Pathology department with state-of-the-art machinery. Our expanded services continue to provide clients with unmatched expertise in veterinary medicine and advanced technology for both diagnosis and treatment in one of the world's largest veterinary hospitals. The entire Angell staff is committed to providing compassionate, personalized care to each client. With a collaborative approach to medicine, our specialty services work closely together to diagnose and treat a wide range of problems in all types of pets. In 2006:

- 61,077 pets were served by 56 veterinarians, 20 residents and 25 interns at Angell (Boston, Western New England and Nantucket)
- 20,081 animals received emergency/critical care
- 2,314 animals were spayed/neutered
- 976 animals received life-saving blood transfusions
- 966 families received \$363,679 in financial assistance for subsidized veterinary care
- 694 radiation treatments were administered
- 453 animals donated blood, some multiple times, helping to ensure that a supply was on hand to help save other animals' lives
- 308 animals underwent an MRI



TOP

The MRI machine at Angell provides life-saving diagnoses for ailing animals.

Dr. Deborah Brady performs a surgery in the new Copeland Animal Care and Adoption Center clinic.

Angell Boston's CT scan is a valuable asset for the Radiology department.

LEFT

Holly recovers following surgery at Angell.
Story page 12.



TOP

Lulu after healing from wounds caused by a fire.
Story page 12.

Three kids explore their surroundings after receiving
treatment at the American Fondouk in Fez, Morocco.

Two of the cerebellar kittens rest following a physical
therapy session at the MSPCA-Angell. Story page 12.

RIGHT

Nevins Farm provided care and a temporary
home for animals like these foals rescued by
MSPCA Law Enforcement. Story page 15.

NEVINS FARM

THE MSPCA AT NEVINS FARM

Nevins Farm in Methuen is the MSPCA's haven for unwanted, neglected and abused horses and farm animals of all types and operates the largest adoption program for these animals in Massachusetts.

Approximately 500 animals came to Nevins Farm last year needing our help. Our knowledgeable staff and committed volunteers provided exceptional care for these animals and worked hard to place them into appropriate and responsible homes. Through a variety of programs we continue to educate the general public about the humane and proper care of horses and farm animals.

Our Equine Rescue and Training Program remains a popular resource throughout the United States and Canada. In 2006, the program's attendance grew by 70 percent having added only two additional events. Locally, our staff is on-call 24-hours-a-day, seven-days-a-week, responding to emergency situations involving injured or sick horses. Nationally and internationally, our expanding Sport Horse Ambulance Program travels to equine sporting events and provides education and training on proper care of equine animals. In 2006:

- 254 horses and farm animals were placed into new homes
- Ambulance staff traveled to 12 equine sport horse events throughout the United States and Canada, including Rolex Kentucky
- 1,530 people attended 21 training demonstrations on equine rescue
- 120 volunteers helped with daily chores, special events and office work
- 40 tons of grain, 215 tons of hay and 175 tons of shavings were used for the animals' care

SNAP: SPAY/NEUTER ASSISTANCE PROGRAM

The Spay/Neuter Assistance Program (SNAP), a collaboration between the MSPCA and the Massachusetts Veterinary Medical Association (MVMA), is dedicated to reducing the number of unwanted kittens and puppies by offering reduced-cost sterilization to low-income pet owners. Approved pet owners are issued a certificate which can be redeemed at nearly 200 participating Massachusetts veterinary practices.

SHALIT/GLAZER CLINIC: The Shalit/Glazer Clinic, located within the Boston Animal Care and Adoption Center, opened its doors August 13, 2006. This clinic provides spay/neuter services to qualified pet owners for a nominal fee.

Both SNAP and the Shalit/Glazer Clinic continue to address pet overpopulation in Massachusetts and directly impact the number of animals relinquished to the MSPCA's Animal Care and Adoption Centers.

- 90,437 pet owners were assisted with SNAP since the program's start in 1986
- 6,079 applications were received in 2006
- 394 Shalit/Glazer certificates were issued in 2006
- 192 veterinary practices participate in SNAP

PETS IN HOUSING

The Pets in Housing program is a national model for developing and implementing pet-friendly policies in public and private multi-unit housing. Since its inception, we have secured the passage of housing laws that permit pets in certain types of housing thereby preserving the human-animal bond tenants share with their pets. One of the program's goals is to facilitate the passage of laws and policies which will allow pets in many types of publicly-funded housing, particularly housing for seniors and disabled tenants.

In 2006, we responded to hundreds of requests for information and assistance that touched the lives of many more people and companion animals. We also visited housing developments to work with tenants and management to reach acceptable compromises. Our publications *Pets In People Places* and *Best Friends for Life* were extensively distributed throughout Massachusetts, nationwide and in response to international requests.

REACHING ANIMALS AROUND THE GLOBE

THE AMERICAN FONDOUK: The American Fondouk in Fez, Morocco is a full-service charitable animal hospital. It provides free veterinary care and education in animal nutrition and the humane handling of working animals including donkeys, mules, sheep, goats and horses as well as domesticated dogs and cats, to Moroccan residents. The MSPCA-Angell oversees the Fondouk's endowment and operations where over 22,000 animals, many with life-threatening illnesses or wounds, were treated in 2006. Thanks to the support of donors like you, the American Fondouk has recently received much-needed equipment including an ultrasound, fiber optic scope and an X-ray machine. This equipment will undoubtedly save lives and enable livelihoods.

WSPA: THE WORLD SOCIETY FOR THE PROTECTION OF ANIMALS: Every year, animals are placed in harm's way as humans wage wars around the globe. In 2006, the

MSPCA raised funds to help WSPA aid animals that were abandoned as people fled the conflict in Lebanon. One shelter in Beirut was partially destroyed by a missile, leaving 200 dogs and cats vulnerable and in need of food and veterinary care. The shelter, run by WSPA Member Society Beirut for the Ethical Treatment of Animals (BETA), is located on the border of Dahye, a suburb where many of the attacks have taken place. Many of the animals were visibly suffering due to ongoing noise and destruction, and the necessary goods to care for them became expensive and harder to find. Your support helped enable BETA to provide food and veterinary care to the animals, as well as to temporarily re-home dogs left without shelter due to the missile strike.

LEGISLATIVE AFFAIRS

The MSPCA's legislative and public policy work is essential in bringing about long-term change for animals. We work locally and nationally to improve animal protection laws and regulations. This work is sustained through our volunteer Animal Action Team members who write letters, make phone calls, attend lobby days at the State House and meet with legislators to help improve the lives of animals. In 2006:

- We played an integral role in collecting 150,000 signatures in an effort to phase out Greyhound racing, strengthen laws against dog-fighting and increase penalties for hurting law enforcement and service dogs. (Unfortunately, the court did not allow this question to reach voters)
- We worked with several communities to help pass effective, non-breed specific ordinances to address dangerous dogs
- We passed a bill in the state legislature to strengthen the animal fighting laws and to prevent abused animals from being returned to the people who hurt them
- Our lobbying efforts and those of our members helped a landmark bill to protect elephants pass the state senate
- We held workshops across the state to train Animal Action Team members on how to help animals through public policy efforts
- Dozens of bills and public policy matters involved our testimony and lobbying efforts, including issues relating to wildlife, companion, farm and laboratory animals
- More than 4,000 Animal Action Team members were mobilized to act on important issues. Our monthly e-newsletter and alerts, combined with our Web site's Action Center, enabled quick and easy action to help animals

LIVING WITH WILDLIFE

The goal of this progressive program is to resolve conflicts people encounter with local wildlife. Focusing on outreach and education, the Living With Wildlife (LWW) program helps people coexist with wildlife safely and peacefully, encouraging tolerance and understanding of our wild neighbors and identifying humane solutions to conflicts. The program also protects wildlife by impacting public policy and laws, particularly focusing on maintaining restrictions on the use of cruel traps. In 2006:

- Canada Geese were at the center of controversy in more than a dozen town meetings throughout Massachusetts. The Living With Wildlife program introduced humane solutions to these discussions and encouraged town officials to solve conflicts with Canada Geese in a humane, long-term and effective manner
- Our staff worked directly with over 35 different communities to humanely resolve conflicts surrounding coyote, beaver and other wildlife concerns
- We worked to prevent the passage of 15 bills that would have harmed or reduced the protection to our state's wildlife
- We received and responded to over 550 calls pertaining to wildlife concerns
- We created new informational flyers to distribute to educate the public on various wildlife conflict resolutions

PHINNEY'S FRIENDS

Phinney's Friends celebrated 10 years of preserving the human-animal bond by helping Greater Boston area clients living with HIV/AIDS who are facing medical, financial and emotional challenges with information and resources. This includes financial assistance for veterinary care, education about pet-related health concerns, pet food, supplies, foster care and transportation to empower them to meet the needs of their much-loved companion animals in order to remain happy and healthy together. In 2006:

- 397 individuals living with HIV/AIDS received Phinney's Friends services
- 640 companion animals received care
- Phinney's Friends has trained and oriented 212 volunteers who provide support to the program's clients and their dearly-loved companion animals
- Phinney's welcomed two new friends: The Pet Lounge and Larkin Ltd.'s publication *Trouble Says Be Tough*



LIVING WITH WILDLIFE

TOP
Honorary guest, Gretel helped to add sparkle to the MSPCA-Angell Holiday Tree Lighting at Boston's Prudential Center.

Phinney's Friends continues to make a difference by keeping pets like Gromit together with owners who are living with HIV/AIDS.

Especially for Pets helped raise awareness of the Phinney's Friends program.

LEFT
The Living With Wildlife staff discussed the humane treatment of geese at town meetings throughout Massachusetts in 2006.

HUMANE LAW ENFORCEMENT

MSPCA Law Enforcement officers resolved several high-profile cases in 2006 by plea bargain including 17 foals that had been surrendered following animal cruelty charges, a defendant charged with killing a seagull and a defendant that surrendered more than two dozen Dachshunds, two cats, two ferrets and an iguana in a single animal cruelty case. Our highly-trained, commissioned special state police officers investigate alleged violations of the state's anti-cruelty laws in all 351 cities and towns throughout Massachusetts. To combat animal cruelty and nurture animal welfare improvements, MSPCA Law Enforcement officers begin by educating pet owners on proper animal care. Our officers also inspect a variety of facilities to ensure compliance with state rules and regulations and to prevent animals from suffering from unnecessary harm. In 2006:

- 43,181 animals were inspected by officers
- 2,942 complaints of alleged animal cruelty or neglect were investigated by officers, 1,162 warnings were issued and officers applied for 20 criminal complaints against 27 defendants
- 761 cases were followed up by officers to ensure compliance
- 590 animals were voluntarily surrendered and 65 animals were seized by MSPCA officers pursuant to warrants
- 641 inspections of pet shops, stables, science fairs and research facilities were conducted; rodeos, horse-pulling and oxen-pulling events were monitored
- 85 court appearances were made by officers
- Dogs were the species most commonly the subject of criminal charges, and the most frequent basis for filing criminal charges was the defendant's failure to provide proper drink and water



SPECIAL EVENTS

The MSPCA-Angell consistently grows with the help of the surrounding communities through interactive events. Each of these events helps us to raise awareness of our mission throughout Massachusetts and beyond its borders. Our signature event, the MSPCA-Angell Walk for Animals, reached new heights in 2006 with a coordinated walk in Boston, Springfield and Cape Cod, raising a record-breaking \$290,000. Our hallmark events also included the Animal Hall of Fame Dinner and Holiday Tree Lightings to

raise money for the 250,000 animals that we help each year. In addition, the seven MSPCA Animal Care and Adoption Centers also raised funds while providing crucial pet care education to new and experienced pet owners throughout the state. In 2006:

- Over 3,000 walkers and 1,200 dogs teamed up in the first-ever state-wide Walk for Animals held in Boston, Hyannis and Springfield in September which raised over \$290,000
- \$350,000 were raised by 380 guests at the Animal Hall of Fame Dinner in May
- \$75,000 were raised by three trees, over 1,200 ornaments and countless participants at the Boston and Western New England Holiday Tree Lighting Events
- 530 guests attended the Spirit of Kindness silent auction in June at the Top of the Hub to help raise \$47,000 for the homeless and abused animals of the MSPCA-Boston ACAC
- 85 guests attended the Furry Affair Auction held by the MSPCA-Cape Cod ACAC in May which raised \$14,000 for the Guardian Angel Fund



COMMUNICATIONS

The MSPCA-Angell's role as a resource grew in 2006; sharing information among the community, adopters, donors, hospital clients and many others including various animal welfare organizations, legislative groups and referring veterinarians. Our message and mission has remained unwavering and has increased its audience through the combination of targeted advertising in radio, television and print media combined with e-newsletters, our *Companion* publication, fundraising appeals and public relations. Our website, www.mspca.org, has also undergone numerous changes in 2006 to improve its function of spreading awareness as an adoption resource, an educational tool, a news outlet, a donor gateway and an interactive information source for our hospital clients. Now website visitors can register their specific interests including species of animal in order to customize their website experience. They can also view animals up for adoption as well as before and after video clips of animals in need whose lives have been changed thanks to our donors. Additionally, Angell clients can use our interactive "Pet Portal" to view account balances, upcoming and past appointments, order prescriptions and update account information. In 2006:

- Over 400,000 television viewers saw our new advertisements which began airing in October and more than 600,000 weekly-listeners also heard our new radio advertising and public service announcements (PSAs) which first aired in November to promote our newly renovated Boston hospital services
- 70,000 supporters were mailed our bi-annual issues of the *Companion* newsletter while many more accessed it online. This publication provides updates on our news, events and happenings
- 8,000 online donors and 900 referring veterinarians received our quarterly e-newsletters. These cost-effective communications keep supporters informed of MSPCA-Angell news, medical services and donor opportunities
- 1,126 veterinarian members of the Massachusetts Veterinary Medical Association received nine editions of Angell print ads in *Mass Vet News*
- 14 direct mail fundraising appeals, 12 All-Star mail updates, 12 e-solicitations and three telemarketing campaigns communicated our mission to supporters and generated \$1,300,882

VOLUNTEERS

The care provided to thousands of animals at the MSPCA-Angell would not be possible without the services of our volunteers. Over the years the volunteer program has grown tremendously, breaking the 1,000 mark in 2006. These dedicated individuals from throughout the Commonwealth donate their time and energy to help us help animals in need whether it is fostering animals in their home, caring for their daily needs in the adoption centers or helping them find a forever home. In 2006:

- 1,077 volunteers donated time to our Animal Care and Adoption Centers, veterinarian hospitals and administrative offices
- 275 pet-visitation volunteers visited nursing home facilities



TOP

The state-wide 2006 Walk for Animals raised over \$290,000 thanks to a record-breaking turnout.

Generous supporters Sarah and Peter Monaco with their dog Lucy.

Jo-Edith Heffron and her team of dogs meet with CEO Carter Luke at the 2006 Walk for Animals.

FAR LEFT

Officer Christine Allenberg catches up with Rusty, a nine-year-old, Australian Shepherd/Border Collie mix, who had been surrendered to the MSPCA-Angell WNE.

Lori Sidman and her dog Monte join WBZ-TV's Sarah Underwood to support the Animal Hall of Fame dinner.

In Memoriam

GLADYS COPELAND

Few people have truly inspired others to action through their own caring as Gladys Copeland. Born in Newfoundland, Canada, Gladys moved to Boston at the tender age of 16. As a long-time Milton resident, Gladys spent many of her days with her dearly-loved cat "Rascal" who provided her with much of her joy. Knowing the important role that animals play in our lives, she first introduced herself to the Angell community by responding to the former Longwood Avenue facility's request via radio for newspaper to line cages. From this seemingly simple response came 50 years of dedication to the mission of the MSPCA-Angell.

In 2006 the Copeland name was raised above the entrance to the new MSPCA Animal Care and Adoption Center in Boston. While this new facility houses far more animals than the former adoption center, it can never replace the woman that aided the plight of millions of animals throughout her life beginning with a simple plea for newspaper.

The Copeland Animal Care and Adoption Center is nearly quadruple the size of the previous adoption center. It boasts the most modern amenities in animal care and adoption facilities, including temperature-controlled environments; cat condos; screened-in porches for cats to lounge; comfortable, state-of-the-art dog kennels and outside fenced dog areas, one with a wading pool. The space emphasizes natural light and modern materials, such as scratch-resistant walls, anti-slip floors and sound-absorbing wall surfaces. Additionally, the adoption center includes the Shalit/Glazer Spay/Neuter Clinic which offers reduced-cost spay and neuter services to low-income pet owners. There is also an education room used for special events. We owe a special thanks to Gladys Copeland for making this beautiful facility possible.



DR. FRANK STANTON

The year closed with the loss of one of the world's most revered broadcast executives and significant supporters of animal welfare. Dr. Frank Stanton, former president of CBS Inc., was renowned for his unwavering integrity throughout his professional life. His character was also comprised of a belief in the importance of kindness to animals; a

lesson taught to him by his mother at a young age. Over the years Frank was an enthusiastic supporter of the MSPCA-Angell. In 1995 he helped to jumpstart the Pet Care Assistance Fund, for which he subsequently established an endowment fund named for his well-loved Corgi, Foxo Stanton-Allison. This fund helps low-income families with ill or injured pets pay for veterinary care at Angell.

It was his mother's lesson that remained with Frank his entire life and came to fruition with a significant donation towards the new



MSPCA-Angell facility in Boston. It is in large part thanks to Frank that people now bring their ailing pets to the Helen Schmidt Stanton Clinical Care Center, named in honor of his mother, for life-saving care and compassion.

Development

As the newly appointed Vice President of Development at the MSPCA-Angell, I would like to take this opportunity to thank those who have welcomed me into this role and to introduce myself to those I have yet to meet.

Having been an animal lover my entire life, the mission of the MSPCA-Angell is one in which I firmly believe. My Shi Tzus, Remy and Chloe, are just two typical examples of the unconditional love and companionship animals can offer, but for many animals, the opportunity to show their affection is stifled by neglect, abuse or the lack of a forever home. We can never tell what the need of the next animal will be when they approach our doors. That is why we require the support of you, our donors, to help the animals that find their way to the MSPCA-Angell.

This past year saw the opening of the Helen Schmidt Stanton Clinical Care and Copeland Animal Care and Adoption Centers in Boston. We received many generous gifts from our friends in support of this wonderful new facility. I plan to lead our Development Team in new efforts to ensure the short and long-term financial stability of the MSPCA-Angell. I anticipate your help as we create new opportunities for annual giving and endowment.

My development experience spans nearly two decades. I will apply this experience to help the MSPCA-Angell grow financially to better care for animals in need. Whether it is for communications equipment for our Law Enforcement officers, new medical devices for our

patients, inexpensive spaying and neutering clinics for pet owners or resources to provide a brief respite for the animal that arrives in our care before it can find a loving, forever home, I will make sure that the needs of the MSPCA-Angell are met.

I look forward to advancing the development goals of the MSPCA-Angell with your input and continued support.

Sincerely,



Alice Bruce
Vice President, Development
MSPCA-Angell



TOP

Alice Bruce, shown with her dogs Chloe and Remy, is MSPCA-Angell's new Vice President, Development.

The Angell Blood Bank continuously needs the support of dogs and cats to replenish their depleting reserves of life-saving blood.

CEO Carter Luke and President Dana Ramish.

FAR LEFT

Scott Taylor, MSPCA-Angell Senior Development Officer for Major Gifts, presents Mrs. Gladys Copeland with the 2006 Emily Appleton Award with Carter Luke and the Copeland Trustees in attendance.

Former CBS President Frank Stanton, shown with his dog Foxo, provided pivotal funds to create the new Helen Schmidt Stanton Clinical Care Center.



How You Have Helped in 2006

In 2006 alone, donors like you have helped us save the lives of thousands of animals. It is only with your help that we are able to care for these sick, injured, neglected and abused animals. The animals below are just a few examples of those that have directly benefited from your donations in 2006 and are now living happy, healthy lives thanks to your support.

BUGSY AND RENEE

In October of 2006, a Good Samaritan discovered two chocolate Cocker Spaniels apparently abandoned and tied to a fence in Dorchester and promptly brought them to the MSPCA-Angell. Bussy and Renee, estimated to be nine-years-old, were diagnosed with severely painful ear infections, which required that their ear canals be removed in order to save their lives — a surgery which rendered them deaf, but eliminated their pain and prevented the infection from fatally reaching their brains. They have recently been adopted together into a loving home.

BULLET

Bullet, one of the three Lunenburg dogs surrendered to the Boston Animal Care and Adoption Center in December 2006, has found a forever home to gain back his health. Bullet is an 11-year-old yellow Labrador who arrived at the MSPCA-Angell severely underweight, due to alleged cruelty. He was adopted and his new owner gave us an update on his condition. After bringing Bullet home, he wrote: "He's adjusting well to the posh lifestyle he deserves. He now has a nice soft bed, warm house, good food, and lots of love and attention. We had a nice fire in the fireplace, watched some TV together, and he fell asleep on the couch by my side. He's having fun discovering all of the smells in the yard. Thanks for making the adoption process so easy." Assisted by the MSPCA Law Enforcement Department, the Lunenburg Police Department investigated this case of alleged cruelty.

CEREBELLAR HYPOPLASIA KITTENS

Four kittens with Cerebellar Hypoplasia, a neurological disorder that made them appear weak and unable to control the simplest of movements, were surrendered to the Boston Adoption Center and placed into the MSPCA's Foster Volunteer Program in September. They all regained strength and have since been adopted. They can now stand and run, albeit with shaky legs, and control their movements enough to stay clear of walls and interact playfully. (photo page 4)

HOLLY

Holly, a one-year-old Terrier mix, was brought to Angell Animal Medical Center by Revere Animal Control in late November after being found outdoors on a chilly night. She appeared to have been hit by a car, however there were no witnesses. Alone and partially paralyzed from her injuries, Holly was unable to stand on her hind legs and was in extreme pain. Angell staff began immediate treatment, which included a full-body cast and canine wheelchair. Following treatment, an Angell Critical Care Unit nurse offered to foster Holly until she fully recovered. As support for Holly poured in over the holiday season, she began standing for several minutes without the support of her wheelchair and has now recovered the full use of her legs.

LULU

Lulu (photo page 4), a Pug/Chihuahua mix, was brought to Angell Western New England (WNE) in August 2006. Firefighters found her burned and injured in an apartment fire in Springfield. She was treated for a broken femur, smoke inhalation and burns. Lulu has now fully recovered from her injuries and has found a new home with Cindy and Joshua Serino.

TOP

The Pink Ranger regained her fluffy coat after months of treatment and foster care from the Animal Care and Adoption Center staff in Boston.

Holly and her foster mother, Marissa Zaleznick, enjoy a moment together at Angell.

Ralph rests a moment in the arms of an Animal Care and Adoption Center staff member.

FAR RIGHT

Bullet enjoys time with his new owner thanks to the help he received from donors.

OLIVIA

Olivia (photo page 14), is a Pug puppy who was found under a bush in a park and was brought into MSPCA-Angell by a kindhearted softball player. When Angell Ophthalmologist, Dr. Daniel Biros examined her, he determined that she had a severe eye infection which left her blind in both eyes. Thanks to the tremendous support of donors like you, Olivia underwent surgery to remove one of her damaged eyes and was treated with antibiotics. She has been adopted and is living happily in her new home.

THE PINK RANGER

The Pink Ranger, an orange kitten, was surrendered to the Boston Adoption Center in October and diagnosed with a severe soft tissue injury due to a crushing/shearing force or a burn. The Pink Ranger slowly began to lose her skin and required three medicated baths each week to prevent infection as well as several surgeries to close the gaping wounds on her back and under her legs. During her healing process, the Pink Ranger also battled a life-threatening upper respiratory infection that required additional medications. The Pink Ranger continued to heal in foster care and later was adopted with another kitten to an animal-lover in Vermont.

RALPH

Ralph, a grey tabby kitten, was the victim of a senseless act of cruelty. A concerned citizen brought Ralph into the MSPCA-Angell Western New England after she saw a group of kids swinging him around by his rear leg. He was badly injured and required orthopedic surgery, which was performed at Angell-WNE. His surgery was successful and he has since been adopted by the McEwan family of Westfield.





SANDY

Sandy, a Cocker Spaniel, was surrendered to the Western New England Animal Care and Adoption Center in September because her owner could no longer afford to care for her. Due to years of unresolved ear infections, Sandy's ear canals were swollen to the point where the only solution was surgery. Sandy went into foster care in November while the MSPCA-Angell raised money for her surgery. Coincidentally, soon after Sandy went into her foster home, her adopters appeared! Pauline and Chuck Tilbe and their dog Bingo all fell in love with Sandy and they adopted her days before her December surgery. Sandy and her new family sent the MSPCA-Angell a Christmas card stating, "We have a great new family now and it wouldn't have been possible without all of you!!"



TOM WILSON AND FLAPJACK

Tom Wilson, a three-week old, partially-blind, orange and white kitten was discovered in Somerville in September — having survived as best as he could with limited eyesight. Upon arrival at the Adoption Center in Boston, the tiny kitten was evaluated by the Angell Ophthalmology team and diagnosed with congenital eye defects. Luckily, eye surgery was not immediately required. Also diagnosed with coccidia, Tom Wilson was separated from the healthy cats. At about the same time, another lost kitten, Flapjack, was found in between two doors at a South End eatery. In addition to surgically reattaching her lip which had separated from her gums, Flapjack was also diagnosed with coccidia and was placed in the same rehabilitation unit as Tom Wilson. The pair hit it off quickly and became inseparable. They have since been adopted together and live in New Hampshire.

SNOWBELL

Snowbell, a Dutch/Dwarf mix rabbit, was surrendered to the MSPCA Animal Care and Adoption Center in Boston in November. He was suffering from extreme malocclusion (a misaligned bite) including a tooth protruding from his lower jaw by nearly two inches. Snowbell underwent extensive surgery at Angell-Boston to remove three severely overgrown teeth. He has since recovered and found a home with a Hingham family who adopted him after seeing his story on television.



TOP

Sandy sleeps contentedly in her new home.

Flapjack hugged Tom Wilson as they bonded in foster care.

A blind Olivia has learned to use her other senses to sustain an active lifestyle.

Law Enforcement Case Updates

Several publicly-reported law enforcement cases were also concluded in 2006. Although, on occasion, some defendants leverage the court system to delay their animal cruelty prosecutions, the three cases described below were resolved relatively swiftly.

FOALS

During the spring of 2006, a horse-owner northwest of Boston was charged with animal cruelty, for failing to provide proper food, water, and shelter for 17 young horses. Appropriately, she had previously signed over and surrendered the 17 suffering foals to the MSPCA.

In December 2006, by plea bargain, her case was continued for a six month probationary period, during which the MSPCA will have the right to inspect the property. The defendant's ownership of horses will be limited, and the defendant also will have to perform community service.

KILLED GULL

During the summer of 2006, a man in the Boston area was charged with animal cruelty for deliberately striking and killing a seagull. Despite initially denying the charges to the media, in December 2006, the accused entered into a plea bargain and received a one-year suspended sentence with one-year of probation. During that time the MSPCA will be entitled to make three inspections of his premises and the defendant will undergo a mental health evaluation as well as performing community service.

DACHSHUNDS

In the fall of 2006, a woman north of Boston was charged with 35 counts of animal cruelty, for failing to provide a sanitary environment for more than two dozen Dachshund dogs, two cats, two ferrets and an iguana. In November 2006, by plea bargain, the defendant pled guilty on several counts against her; other counts were continued or dismissed.

During the defendant's two-year probationary period, the defendant's ownership of animals will be limited, and the MSPCA will have the right to inspect the defendant's premises. All but two animals were signed over and surrendered to the MSPCA.



TOP

One of 17 foals that were surrendered to the MSPCA in 2006.

An X-ray of the seagull's neck shows where the spinal column was injured.

MSPCA Law Enforcement officers rescued over two dozen Dachshunds and brought them to the Boston Animal Care and Adoption Center.

COPELAND ANIMAL CARE & ADOPTION CENTER



Financial Report 2006

Our new Boston facility was completed and open for business in June of 2006. This spectacular facility provides our world-class staff with a state-of-the-art facility in which to better serve clients and animals in the Greater Boston area. Angell-Boston had its best year ever in 2006, serving close to 75,000 animals with an 11% revenue growth over 2005.

Requests to the Society in 2006 were at a healthy level of \$6.4 million versus \$4.8 million in 2005 and total return on the Society's investments was higher at 11% for the year, up from 4% in 2005.

2006 ended with both optimism and challenges for the Society's finances. Our new fundraising team and Angell-Boston's new facility will provide great opportunities for 2007.

As we continue to look for ways to strengthen our programs' efficiencies, we remain committed to our mission of caring for animals. Your continued support and commitment to this organization is greatly appreciated and directly impacts our ability to serve animals.

Sincerely,

A handwritten signature in cursive script that reads "Carter Luke".

Carter Luke, CEO

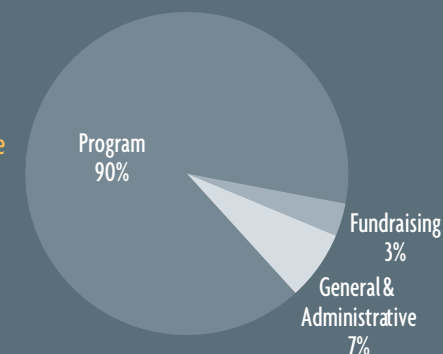
STATEMENT OF OPERATING REVENUE, EXPENSES AND NON-OPERATING ACTIVITIES

	2006	2005
OPERATING REVENUE		
Gross revenue from health & hospital services	\$32,411,054	\$29,115,749
Less discounted and subsidized care	<u>(1,479,863)</u>	<u>(1,466,193)</u>
Net revenue from health and hospital services	30,931,191	27,649,556
Bequests received	6,415,953	4,804,698
Annual giving, hospital and adoption center donations	7,364,195	9,761,526
Net income/(loss) from outside managed trusts	475,346	456,266
Investment income appropriated for operations	1,730,000	1,730,000
Other income	<u>2,227,107</u>	<u>2,164,342</u>
Total operating revenue	49,143,792	46,566,388
EXPENSES		
Health and hospital services	36,083,328	32,479,653
Humane services, adoption centers and animal advocacy	9,406,435	8,162,529
Publications, communications and marketing	<u>907,406</u>	<u>1,166,344</u>
Total program expenditures	46,397,169	41,808,526
Fundraising	1,735,946	1,742,661
General administration and support	<u>3,562,926</u>	<u>4,094,115</u>
Total operating expenses	51,696,041	47,645,302
Change in net assets from operations	(2,552,249)	(1,078,914)
NON OPERATING ACTIVITIES		
Balance of long-term investment income/(loss)	2,293,646	(405,740)
Net income/(loss) from outside managed trusts	765,000	177,402
Capital campaign contributions	1,079,871	1,883,632
Capital campaign expenses	234,668	(555,467)
Pension plan and post retirement medical expenses	<u>(1,687,504)</u>	<u>(1,824,491)</u>
Total non operating activities	2,685,680	(724,664)
OTHER FINANCIAL INFORMATION		
Endowment, at market value	45,429,604	46,633,532
Other assets	22,712,124	26,403,871
Plant, property and equipment, net	39,625,684	31,010,037
Depreciation expense (included in expenses above)	1,672,868	1,332,125
Capital outlays	3,161,608	438,389
Pet care assistance fund contributions	261,437	304,673

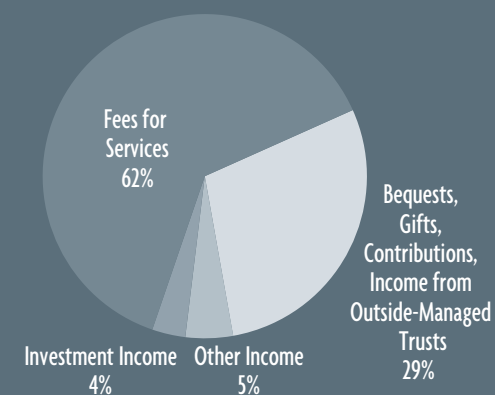
This reported information is from the MSPCA unaudited financials.
2005 endowment value adjusted for comparability.

For more information, contact Carter Luke, Chief Executive Officer, 617 541-5005.

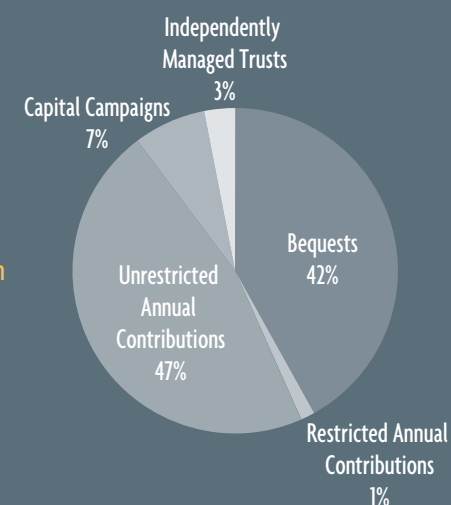
Program, General & Administrative and Development Expenses



Sources of Income



Gift & Capital Campaign Income





Donors in the Spotlight

Over the past year, numerous contributions from our donor base made it possible to complete the expansion and renovation of the MSPCA-Angell in Boston. We would like to take a moment to thank all of those who provided us with the much-needed funding to complete the facility and in turn increase the quality of care and comfort that we now offer. Without your help we would not be able to treat the number of cases that we now see on a daily basis at Angell or sustain our increased adoption rates in the Animal Care and Adoption Center.

We especially want to acknowledge the generous support of Connie and Peter Lacaillade, Anne and Chad Gifford and Julie and Ronald Druker – each of whom stepped forward with significant contributions during the crucial final phase of the building campaign. Their commitments continue to inspire others to provide financial support for the Boston building project.

2006 FUNDRAISING ACCOMPLISHMENTS

The MSPCA-Angell donors are the life-blood of our organization as they continue to show their support and belief in our mission. Since we do not receive public funding the importance of corporate and private donations is immeasurable.

The following are a few fundraising highlights of the year:

- The Society received \$6,415,953 in bequests in 2006. The largest was \$2,700,000 from the estate of Mary G. Robinson
- Our Annual Giving Program, Hospitals and Adoption Centers received \$7,364,195 in donations
- The Boston Capital Campaign reached \$15.8 million in total funds raised with \$1.1 million in new gifts and pledges
- Our two signature fundraising events, the Animal Hall of Fame Dinner and the Boston Walk for Animals collectively raised \$640,000
- The Boston and Western New England Holiday Trees, fundraisers for the Pet Care Assistance Fund, raised a total of \$75,000

The following is a list of our donors who contributed \$250 or more during the year.

All contributions, no matter what amount, help us to build strong foundations for this very special organization.

TOP

MSPCA-Angell supporters Connie Lacaillade, Anne Gifford and Julie Druker at the Celebration of Kindness and Care brunch.

Patrons Ashley and Paul Bemon with their dog Lincoln enjoy the Animal Hall of Fame dinner.

Carter Luke thanks President Emeritus Dr. Gus W. Thornton at the Celebration of Kindness and Care brunch.



NECCO EVENT



TOP
 Jessica Gifford Busch emcees the unveiling of the animal lover Sweethearts at NECCO®.

Honored guests at the Celebration of Kindness and Care brunch included seated L to R: Jane Cummings, Liz Allison, Chris Houston, and Connie Noble. Standing L to R: George Noble, Carter Luke, Penny Schiller and Bob Cummings, Chairman, Board of Directors.

Robert Beal, with his dog, Mountie Too, was the host for the Animal Hall of Fame dinner.

LEFT
 NECCO® CEO Domenic Antonellis kicked off Valentine's Day with MSPCA staff and supporters at the candy manufacturer's announcement of its Sweethearts® Conversation Hearts for animal lovers.

Photo compliments of Greg M. Cooper.

Donors of 2006

\$2,500,000 AND HIGHER

Estate of Mary G. Robinson

\$1,000,000 - \$2,499,000

E. Hadley Stuart, Jr. TTEE

\$500,000 - \$999,999

J. Robert and Diane Coleman
George and Constance Noble

\$200,000 - \$499,999

Peter and Constance Lacaillade
Estate of Christine C. O'Rourke
Estate of Ruth Barlow Strong
Estate of Johanna M. Susat
Alice Wentworth Trust

\$100,000 - \$199,999

Anonymous (3)
Estate of Carolyn Aldrich
Estate of Eva Price Boggs
Eleanor and Harold Brooks Trust
Estate of Maxine Hoffer
Kenneth and Lorraine Levine
Mary W. Nordblom
Estate of Louise Roberts
Estate of Mary L. Sullivan
Estate of Laura Swanson
Estate of Ernestina Vinet
Estate of Dorothea M. Waterbury

\$75,000 - \$99,999

Estate of Sybil G. Byrnes
Carlee Charitable Trust
Estate of Helen K. Roller
Estate of Bernard A. Saunders

\$50,000 - \$74,999

Anonymous (1)
Bank of America Foundation
The Boston Foundation
Fidelity Charitable Gift Fund
Mr. and Mrs. Charles Gifford
Peter and Sarah Monaco
Martha Morse Foundation
Estate of Ann Najarian

Estate of Leona Pellerin
Estate of Howard Sexauer
Shirley Shattuck Windsor
Charitable Trust

\$25,000 - \$49,999

Anonymous (1)
Graham T. and Elisabeth Allison
Elisha Ashton Trust
A. W. Baldwin Charitable
Foundation, Inc.
Bank of America
Mr. Robert L. Beal
Timothy and Laura Bryan
Estate of Sarah B. Cannon
Car Program LLC
Community Foundation of
Western Massachusetts
Mrs. Marion Covich
Ms. Kathleen Crawford
Estate of Virginia M. Deal
Estate of Bessie M. Draper
Estate of Harry W. Dunning
Mr. John J. Fish, Suffolk
Construction Company
Frank T. Gang, Global Naps
Estate of Mary E. Greene
Estate of Barbara Jack
Kahn Charitable Foundation
Ms. Carol Lennon-Longley
Estate of Martha Magoch
Jeff and Libby Mallon
Eileen McDonagh and Robert Davoli
Mr. and Mrs. Richard Mordaunt
Thomas A. Pappas Charitable
Foundation
Ms. Carol S. Parks
Charles and Cornelia Pfaff Fund at
the Boston Foundation
Barbara and James Schaye
Elmina B. Sewall Foundation
The Hadley and Marion
Stuart Foundation
The Nion Robert Thieriot Foundation
Estate of Barbara B. Tighe

Estate of Lydia Tobe
Richard and Marjorie West Trust
Whole Foods Market
Gladys F. Wilde Trust

\$10,000 - \$24,999

Anonymous (3)
Joseph L. Amodeo Trust
Frank Anderson Fund at the
Boston Foundation
Mr. and Mrs. George Ballantyne
Frank Stanley Beveridge Foundation
William Clarence Briggs Trust
Bill Busch and Jessica Gifford Busch
Combined Jewish Philanthropies
Mrs. Gladys Copeland
Ms. Julia Cox
Michael P. Danziger
Mrs. Harold T. Davis
Irene and George Davis Foundation
Jonathan and Wendy Derby
Eugene A. Dexter Charitable Fund
Charles J. Draper Trust
Julia and Ron Druker
Estate of Lois Berger Duke
Mr. and Mrs. James N. Esdaile, Jr.
Especially For Pets, Inc.
The Flatley Foundation
Estate of Paul M. Fontaine
Ms. Ann Gallo
Karl and Joyce Gladstone Foundation
Estate of Thelma R. Glazounow
The Goldman Sachs
Philanthropy Fund
Estate of Nelson Goodman
Estate of Campbell C. Groel
Harding Educational &
Charitable Foundation
Gustave Hartman Trust
William and Patricia Hayes
Bennett and Jo-Edith Heffron
Dorothy B. Hickey Trust
The Highland Street Foundation
Estate of Mary U. Hollidge
Mrs. Virginia Jahn

Mary Allison Johnson Fund
Mrs. Doris E. King
Mr. and Mrs. Selwyn A. Kudisch
Miss Wallace M. Leonard
Estate of Frances Leventritt
Local Independent Charities
of America
Estate of Jennie Longley
Carter Luke and Penny Schiller
Estate of Virginia D. Mann
Massbank Charitable Foundation
Estate of Evelyn McElhiney
Estate of Helen Monaghan
Mr. William Nemever
Estate of Anne L. O'Brien
Jack and Kelly Ornell
Estate of Janet Marston Parsons
Estate of Addie M. Perry
Mr. and Mrs. John R. Pingree
Nina Purdon Trust
Rhode Island Foundation
Ms. Marcia Sassoon
Sawyer Charitable Foundation
The Clinton H. and Wilma T.
Shattuck Charitable Trust
Matthew and Lori Sidman
Estate of Alice J. Stacey
Mr. and Mrs. Gilbert L. Steward, Jr.
James M. Stoneman Charitable Fund
Sun Life Assurance Company
of Canada
Estate of Elizabeth H. Sweeney
Rubert C. Thompson Fund
Edna Tomkins Tr U/Will
Susan and Alan Tuck
Estate of Margaret K. Veayo
Estate of Marion and
James Wadsworth
Ms. Karen Watkins
F. Roscoe and Vila Webber
Charitable Trust
Wilmer Cutler Pickering Hale and
Dorr LLP
Jeffrey and Marla Wolk
Estate of Clara Frances Wood

The M.S. Worthington
Foundation, Inc.

\$7,500 - \$9,999

The Behrakis Foundation
Ashley K. and Paul M. Bernon
Blackdog Builders
Estate of F. Marino D'Amato
Alice M. Davenport Foundation
E.L.I. Systems, Inc.
Clara Helen Firth Trust
Estate of Dorothy I. Garfein
iCare Workplace Giving at
Fidelity Investments
Estate of Stella D. Jenkins
Emily Graham Storrow Trust
Frank B. Thayer Fund At the
Boston Foundation

\$5,000 - \$7,499

Anonymous (1)
Ms. Lisa D. Allen
Mr. and Mrs. Arthur D. Altman
John and Jennifer Bemis
Bingham McCutchen LLP
Estate of Emily A. Bradbury
Ms. Katharine Bradford
Chris and Jim Burnard
Paul and Virginia Cabot
Charitable Trust
Cambridge Trust Company
Ms. Mary E. Cavanaugh
J. William Codinha and Carolyn
Thayer Ross
Ferdinand and Susanna
Collredo-Mansfeld
Lindsay and Ellen Cook
Copeland Foundation
Ms. Joan H. Corell
Patricia Cornwell Foundation
Estate of Marjorie S. Craig
Mrs. Robert C. Davison
Steven and Anne Dodge
Eastern Dog Club, Inc.
Especially For Pets, Inc.

Fiduciary Trust Company
M.S. Fink Charitable Trust
Ms. Lillian J. Freedman
Ms. Diane J. Gallan
Elizabeth Grant Fund at the
Boston Foundation
Mr. Richard Grudzinski
Estate of Elizabeth H. Hayward
Roy A. Hunt Foundation
Arthur M. Ingold Trust
Frederick and Jane Jamieson
LA Weightloss
Richard LeBlanc and Charles Carroll
John and Mary Littleford
Wayne and Maria Maggio
Mr. and Mrs. Ellice
McDonald, Jr., CBE
Ms. Lucy Metcalf
Lyman and Minnie Morrison Trust
Nutter, McClennen & Fish LLP
Emory R. Park Trust
Ms. Roberta L. Paron
Pearson Prentice Hall
Estate of Joseph J. Picone
Portsmouth Athletic Club
Estate of Ruth J. Redding
Sarah W. Rollins Charitable Trust
Mrs. Evelyn C. Schwager
Estate of Dorothy Sheridan
David and Kara Steinberg
The Telaka Foundation
Mrs. Ruth F. Thayer
Dr. Gus W. Thornton
TNCI
The Irving S. and Edyth Usen Family
Charitable Foundation
Mrs. Rosamond G. Walbert
Donald and Susan Ware
Peggy Watkins and John Carberry
Welch and Forbes LLC

\$2,500 - \$4,999

Anonymous (5)
A Friend A Fan

Alvord Family Foundation
Ameriprise Financial
Mrs. Harriet Aspden
Mr. Richard Balsbaugh
Bank of America
T.D. Banknorth
Mr. and Mrs. Robert W. Barbour
Mary Ellen Bell Trust
Beryl Benacerraf, M.D.
Estate of Clyde Bergeron
Mr. and Mrs. Donald A. Berube
Ms. Martha Binney
Eugene C. Butler Trust
The Capital Group Companies, Inc.
Cedarville Athletic Club
Miss Kathleen Cole
Estate of Rita J. Collins
Estate of Claire P. Comey
Lucy A. Cooledge Trust
Frances W. Cooper Trust
Mona Drew Corbin Trust
Estate of Janet M. Corliss
Lotta M. Crabtree Trust
Mr. and Mrs. Robert S. Cummings
Stephen Darr and Linda Fermery
David and Tricia Doran
Equilibrium
Essex County Community
Foundation
Attorney Barbara S. Finger
Steven and Lisa Finkel
Leo and Elsie Flaherty
Florence Savings Bank
Michael and Courtney Forrester
Elaine Foster Family Charitable Lead
Annuity Trust
Ms. Myra Fournier
Mr. and Mrs. Charles Ganson, Jr.
Estate of Ruth E. Garrahan
Mr. and Mrs. John R. Gier III
Leslie and Alex Gold
The Edward Gorey Charitable Trust
John Hancock Financial Services, Inc.
Zachary and Stephanie Harvey
Edna W. Heazlit Trust

Hellman Family Foundation
 Mr. Crosby Hitchcock
 Mr. John Hitchcock
 Estate of Doris D. Holt
 Mr. David J. Howard
 Ms. Amelia Hughes
 Keith and Mary Kauppila
 Ms. Ann-Marie Lynch
 Mary Maksutian
 Merial, LTD
 Ms. Anne Micheli
 Middlemede Foundation
 Katharine A. Morey Trust
 Ms. Martha Mugar
 Estate of Claire T. Mullins
 Myers Kauppila Family Foundation
 Natural High
 Nixon Peabody LLP
 Mary A. Noble Trust
 The Northern Trust Company
 Emily Paul and John Kleshinski
 Ms. M. Kim Pelosi
 Petfinder.Com Foundation
 Ms. Rebecca Phipps McGrail
 Mr. Michael P. Quercio
 The Christopher Cutler Rich
 Memorial Trust
 Isabel L. Ritter Trust
 Michelle Rosen
 Mr. Mark Schwarzmann
 Sears Family Charitable Lead
 Annuity Trust
 Ms. Mary P. Seman
 Mr. and Mrs. Norton L. Sherman
 George and Beatrice Sherman Family
 Charitable Trust
 Estate of George A. Smith
 Squishy Doggies
 Mr. and Mrs. John G. Stevenson
 Elsa P. Stickney Trust
 Ms. Viola M. Storer
 Symantec Corporation
 Teddy Bear Pools and Spas
 Janet Tiampo and David Parker
 Tillie's Team
 Ms. Jennifer Tisdale
 Lewis and Maisie Weeks Trust
 Weil, Gotshal and Manges LLP
 Estate of Marion E. Wheeler
 Ms. Anne Sears Wilson
 Dennis and Nicole Wine
 Katherine Winter Trust
 World Society for the Protection
 of Animals
\$1,000 - \$2,499
 Anonymous (5)
 Jon and Deborah Abrams
 Nancy Adams
 Tom Aldcroft
 Harold and Bridget Allonen
 The Allyn Foundation, Inc.
 Mary Louise W. Almeida Trust
 Marla Andrews
 Ms. Lisa Aprea
 Ms. Catherine A. Armstrong
 Aspect, Inc.
 Mr. and Mrs. Samuel Bailey, Jr.
 Ms. Bobbi Baker
 Dr. Sallie L. Baliunas
 Bank of America United
 Way Campaign
 Alan Banks
 Neva S. Barber Trust
 Paul and Heidi Barclay
 Charles and Elizabeth Barker
 Ms. Catherine Cluett Belden and
 Mr. James D. Nail
 Inez Benjamin Foundation
 Joel Berman and Sandy Rosenbaum
 Ms. Sharon Bernstein
 Estate of Galina Bertelsen
 Jeanne Berwind
 Ben and Barbara Beyea
 Mr. and Mrs. William L. Biach
 Big Y Foods, Inc.
 Pauline Bill Trust
 Raymond and Dolores Billie
 Bertram D. Blaisdell Trust
 Thomas and Cecelia Bolz
 Mr. Whitford S. Bond
 Estate of Constance Borden
 Linda Bornstein and Gene Reilly
 Boston Capital Foundation
 Helen and Joseph Bouscaren
 John J. Bowen
 Bradford Latitudes
 Lyman B. Brainerd Family Foundation
 Dr. Anthony Breglio
 Estate of Richard L. Brickley
 The Elizabeth and Thomas Broadus,
 Jr. Foundation
 James and Joan Brooks
 Ms. Jane Brown
 Mr. and Mrs. Leonard Brum
 Ms. Lisa Stevenson Bryan
 Ms. Barbara Burnim
 Ms. Andrea Cabral
 California Community Foundation
 Ms. Eleanor S. Campbell
 The Capital Trust Company
 of Delaware
 Maureen A. Carmain Charitable
 Foundation
 Mr. and Mrs. Robert S. Carroll
 Ms. Eileen Casey
 Cats For Peace
 Benjamin Chalich
 Chicopee Savings Bank
 Ruth Christopher and
 Michael Vozzella
 Michael and Victoria Chu
 Mr. John S. Cleary
 Andrew and Ashley Cole
 Laura and Kevin Colebank
 Comcast Spectacor Foundation
 Community United Way of
 Pioneer Valley, Inc.
 Mr. Paul Connors
 Alison Coolidge and Tom Borieko
 William and Susan Copeland
 Joseph and Joanne Corsiglia
 Ruth Covo Family Foundation
 Credit Suisse First Boston Corp.
 Nancy and Thomas Creed
 Ms. Colleen Cullen
 Ms. Nancy Dagdigian
 Ms. Kathleen Daley
 Ms. Alissa Daniels
 Day, Berry and Howard LLP
 Erika DeFeo
 Mr. John Delaney
 Jonathan Delgado and Catherine Bird
 Deloitte & Touche
 John Denardo and Susan Schwab
 John and Jennifer DeSisto
 Ms. Michelle Dinon
 Discovery Communications, Inc.
 Estate of Dorothea H. Dodge
 Doggie Day Pet Services
 Eaton Vance Management, Inc.
 Thelma Emery
 Mr. Ronald Estrella
 Estate of Muriel S. Evans
 E. Joseph Evans Trust
 Ms. Barbara Ewen
 Madge Fairfax Trust
 Mr. Timothy Finn
 Martin and Paula Fisch
 Ms. Nancy Fischman
 Alexander and Jennifer Fisher
 The Fisher Family Foundation
 Ms. Cheryl Forte
 Ms. Candace Fox
 Mrs. Sally Frank
 Ms. Julie Freedman
 Mr. and Mrs. Roger French
 Friends of the Animals
 Mrs. Mary Frothingham
 Ms. Marcella Gandolfini
 Mrs. Ute Gannett
 Chris and Suzanne Garceau
 Michael Gazala and David
 Cooperstein
 Toni K. Gelotte
 Ms. Betsy Gildroy
 The Gillette Company
 Gillette Stadium
 Ms. Betsy Gillin
 Laura and Allen Glynn
 Jackson and Irene Golden 1989
 Charitable Trust
 Ms. Lila Goldman
 J. Max and Stevanka Goodson
 Shai Gozani
 Grantham, Mayo, Van Otterloo
 & Company
 Peter and Ellen Gray
 Greater Boston Bankers Association
 William and Linda Green
 Ms. Mary Gresham
 Mr. Richard Grubman
 Estate of Gertrude H. Guillow
 Alan and Janet Hale
 Ms. Elizabeth Hammer
 Estate of Helen Hammond
 Mr. Michael Hamoir
 Hanson Riding Club
 Ms. Martha Stone Harley
 William Havemeyer and
 Rebecca Schulman
 Dr. and Mrs. Larry Hawk
 Mr. Neal Heffron
 Mr. Sigmund E. Herzstein
 Harold and Elizabeth Hestnes
 Hewlett-Packard
 Ms. Cynthia Hinckley
 Mr. William Hodgins
 Ms. Andra Hollis
 Ms. Amanda W. Hopkins
 Mr. and Mrs. Wesley Horton
 Ms. Katherine Howard
 Ms. Kat Hudson
 The Huisking Foundation
 Drs. Reed Drews and Lisa Iezzoni
 Mr. Jeffrey Ikler
 Barbara Jablonski
 Vincent and Pauline Jacinto
 Ms. Judith Jackson
 Mr. Sean Jackson
 Jamaica Hill Real Estate
 Janelon Associates
 Estate of Surrine Jaroslaw
 Mrs. Melinda Jerauld
 Jockey Hollow Foundation
 J. B. Jones and Rachel Sachs Jones
 Ms. Melinda Julbert
 Rita J. and Stanley H. Kaplan
 Family Foundation
 Dr. Harriet A. Karkut
 Mr. Daniel Katzer
 Walter and Elizabeth Kenyon
 Kenyon Family Swim Team
 Mr. Mike Kidder
 Ms. Hannah Kiernan
 David and Betsey Kilmartin
 Charitable Foundation, Inc.
 Richard and Jeanne Kitz
 Ms. Nancy F. Koehn
 Mr. Rob Koning
 Lance and Maria Koutny
 Mr. Geoff Kronik
 Mr. and Mrs. Saul Kurlat
 Elizabeth Lackey
 Gary and Debra Lambert
 David Landers
 Estate of Priscilla R. Lane
 Latitudes of Methuen
 Latitudes of Salisbury
 Ms. Jean Leone
 Mr. Jonathan J. Levine
 Ms. Catherine H. Lilly
 Mr. James Linthwaite
 Litowitz, Inc.
 Ms. Joelyn Livingston
 Mr. Jonathan Lloyd Jones
 Lowell Five Cent Savings Bank
 Ms. Elisabeth Anne Luick
 Luscious Boston Brownie
 MacAdam Loughry Charitable
 Foundation
 Mr. and Mrs. Robert Macleod
 Donald and Marilyn Malpass
 Dr. Ann Marie Manning
 Marsh and McLennan Companies
 Mass Quarter Horse Association
 Ms. Karen Matulis
 Annsley and Bobby McAleer
 The John McArdle III and Joan
 Creamer McArdle Foundation
 John and Gail McCarthy
 Ms. Mary McCormick
 Douglas and Deane McCraith
 Ms. Lynne McDonough
 The Terrance P. Linda Puls McGuire
 Charitable Fund
 Grace P. Meekins Fund
 Mellon
 Mellon Private Wealth Management
 Middlecott Foundation
 Montesano & Tallarico LLP
 Mrs. Harue Midtmoen
 Ms. Charlotte Mitchell
 Robert A. Moeser
 Ms. Helen Mooradkanian
 Moran Family Charitable Foundation
 Ms. Judith Moroz
 Craig and Ann Muhlhauser
 Robert and Jacqueline Nason
 Ms. Nancy Naughton
 Mr. John Nelson
 Lawrence and Caterina Nelson
 Mary Jane and Cary B. Nelson
 Charitable Gift Fund
 Roger and Louise Neuhoff
 Miss Jane Newhall
 Ms. Heidi Nitze
 Kenneth and Marianne Novack
 Ms. Andrea Nye
 Mr. Paul Osborne
 Rod and Martha Owen
 Ms. Ruth Padilla-Garcia
 Ms. Barbara Page
 Estate of Eva M. Palmeira
 Dr. Nicholas Palumbo
 John and Mary Parker
 Partners For Pets
 Mr. and Mrs. Harvey Pastan
 Paws For Arnold

Ms. Elinor Payeur
Robert and Judith Peacock
Willey and Marianne Peckham
William and Marlene Pepin
Astrid Peterson, M.D.
Janell Phillips and Joshua
Levin-Epstein
Dr. Patricia Pickett and Mr. Stephen
J. Telfer
Dr. Louis Pieper, Jr.
Ms. Susan Pioli
Kevin Poole and Michael Vacchione
The Pooper Scoopers
Maria Porras and Curtis Medeiros
Ms. Elizabeth Post
Ms. Virginia Povall
Puddycat Dolls
Pyramid Radio, Inc.
Dana W. Ramish
The Reamer Family Foundation
Ms. Ellen Reardon
The Receivables
T.J. and Pei-Lin Reed
Kevin and Cara Richard
Mrs. Charles Richey, Jr.
Ms. Elizabeth Riley
Dr. and Mrs. Richard M. Roberts
Kenneth Rock and Carol
Glauber-Rock
Estate of Sandra Sheppard Rodgers
Ms. Holly Rogers
Mrs. Karan Ross
Royal Jewelers
Drs. Robert and Nina Rubin
Ruggles and Friends
Janice T. Saal, M.D., Ph.D.
Ian and Bonnie St. Germain
Marilyn Santoro
Joseph Savy
Ms. Emily Schabacker
The Schechter Foundation
Margaret Schmidt and
Kenneth Danila
Ms. Eva Schocken

Mr. Charles Schwager
Scoot's CEO Squad
Dr. and Mrs. Jordan Scott
Mr. Mark Sedran
The Shane Foundation
Mr. and Mrs. Russell Shappy, Jr.
Henry and Kathryn Shaw
M.G.W. Shaw
The Sheenan Family Foundation
Ms. Eileen Shevelin
Mr. Doug Sickler
Ms. Werner Sievers
Mona Sigal and Julien Vaisman
David and Ann Simmons
Mr. Michael Simpson
Dr. Allen Sisson
Ms. Linda Skole
Mrs. Jennifer So
The Lawrence and Lillian Solomon
Fund, Inc.
Ms. Valerie Sorenson
South County Chiropractic, P.C.
Ms. Lisa Spampinato
Spaulding Rehab
Mrs. Lois Stebbins
George and Charlotte Steeves
Ms. Carole Steffano
Mr. James Stockwell
Chris and Erin Stulb
Dr. and Mrs. William Sylvia, Jr.
Ms. Linda Taylor
Dr. Sarah Louise Taylor
Team Charlie
Team Overseers
Team Shire
Christopher and Elizabeth Thompson
Peter and Diane Tilkemeier
Ms. Ethelanne Trent
Tresorelle Foundation
Ms. Carolina Tress-Balsbaugh
Mr. Steven Tromp
Truehand, Inc.
The Trustees of the Reservations
Charles and Lorna Tseckares

Dr. Margaret Uprichard
Mr. Richard D. Urell
Urell, Inc.
Vanguard Charitable
Endowment Program
Ms. Angela M. Ventola
Ms. Amy Vickers-Smith
WTK Associates, Inc.
William and Robin Wakeham, Jr.
Ms. Diane Wald
Walking With Weenies
Mason Walsh
The Warrington Foundation
Ms. Amy Watt
John and Susan Watts
Ms. Beth Webster
Arthur D. Weekes, Jr.
Charitable Trust
Ms. Wesley and Mr. Rosenstein
Karen Williams
Winchester Vet Group
Mary Winter Trust
Ms. Ashley Wisneski
Dr. Joan G. Wuterich
Ms. Ann Yeomans
Ms. Seiko Yoshikawa
Ms. Bonnie R. Zeledon
Isaac Ziegler Charitable Trust
Dr. Joan Zofnass

\$500 - \$999
Anonymous (3)
Ms. Linda Abrams
Drs. Ken Abrams and Kathleen
Pointek
Ms. Joan Adams
Mrs. Jebb Allen Agnew
Kusum Ailawadi and Anand Natrajan
Melissa Allen
Ms. Elizabeth Allred
Peter and Christine Ambrose
Amesbury Flatbread
Michael and Tracy Amirault
Albert Andrew Trust

Animal Hospital of Greenwich
and Stamford
Animal Rescue League of Boston
Russell and Ellan Anspach
Ms. Jennifer Ashburn
Ms. Julie Atwood
Bae Systems
Estate of Louis Baer
Ms. Pamela Baker
Ms. Elizabeth Baldarelli
Mr. Frederick Ballou
Ms. Rebecca Ballou
Ms. Ann Barker
Mr. Michael Barrett
Mr. and Mrs. Stephen Barrow
Ms. Beth Batchelder
Fredericka Baytos and Joseph Huber
Ms. Eugenie Beal
Ms. Patricia Beckerle
Mr. Christopher Belmonte
Richard and Marjorie Bemis
Ms. Lucy Wilson Benson
Albert Benson and Joanne Kossuth
Mr. Brian Berman
Ms. Gloria Bernier
Joseph and Tricia Berry
Ms. Diane Berube
Mrs. Thelma Bettencourt
John and Marjorie Beyersdorf
Mr. James Bianco, Jr.
Ms. Sandra Bimber
Ms. Andrea Binder
Richard and Barbara Binder
Richard and Jane Blau
Mr. Howard Bloom
Molly and Emma Bloom
Mr. and Mrs. Robert Bolling, Jr.
Donald and Ann Bolt
Mr. Michael Borkum
Bostik, Inc.
Ms. Patricia Bosworth
Mark Botch
Mrs. M.W. Bouwensch
Mr. and Mrs. Gerard Brandi

Ms. Sylvia Brandt
Joyce Brasier
Annie Breckenridge Fund at the
Boston Foundation
Ms. Christine Brennan
Ms. Jill Bresky
Ms. Judy Brew
Ms. Amy McClellan Britton
Ms. Mary Brook
Mr. Rick Brooks
Alan and Sari Brown
Ms. Shirley Budden
Buddy's Buddies
Gregory E. Bulger Foundation
Mr. David Bundy
Ms. Mary Buonanno
Mr. Jason Buonopane
Ms. Kathleen Burge
Dennis Burke, Inc.
Ms. Katharine Butler
Cheri Butts
Dr. Barbara Byse
Ms. Rebecca Cadima
Mr. David Cameron
Ms. Dianne Campos
The Canicula Foundation
Ms. Paula Cantor
Leonard and Lorraine Cauty
Ms. Dorothy Caprera
A. Charles and Mary Jane Caranci, Jr.
Ms. Katie Carlisle
John and Christine Carney
Ms. Barbara Carter
Mrs. Lucy Carter
Gary Cassanelli
Cassie's Crew
Cedardale Health Center
Ms. Kristen Chaisson
Ms. Ann Charette
Ms. Miriam Chernoff
The Children's Hospital
Citizens Financial Group, Inc.
Thomas and Judith Clay
Clean Harbors Environmental Service

Shawn and Lori Coghlan
Martin and Marjorie Cohn
Coille Limited Partnership
Ms. Diane Collins
B.J. Comerford
Community Gifts Through Harvard
Computer Associates
International, Inc.
Ellen Concannon
Connecticut Veterinary Center
Ms. Kelley Connolly
Ms. Patricia Connolly
Felix and Jane Conti, Jr.
Ms. Christina Corbett
Mr. David Corbin
Countryside Veterinary
Ms. Lois Cowan
Ms. Jamie Crivello
Margarette G. Crossman Trust
Marcia Crumley and Scot Lehigh
Mr. Donald A. Cummings
Estate of Marion W. Currier
Ms. Mae Cushing
James and Sharon Cutter, Jr.
CVH Crew
Ms. Karen Cwirka
Ms. Kelly Daigneault
Richard and Jo Anna Dale
Charles and Lucille Dane
Mrs. Sally Daniels
Dinah Daniels and Stephen Dick
Ms. Maria Carlota Dao
Dartmouth Furballs
Ms. Roslyn Daum
Ms. Suzanne Davis
Davis Square Dogs
Ms. Mary Dawley
Mr. Richard DeAngelis
Audrey Dee
Mr. Sean Delaney
Ms. Diane DeMarco
Mr. Edmond Dennehy, Jr.
Anthony and Carolyn DeThomas
Ms. Caroline Diamond

Mr. Paul DiMartino
Mr. Jim Diment
Ms. Kathryn Dinovo
Estate of Dorothea Dodge
Dog B.O.N.E.S
Ms. Susan Doll
Ms. Joanne Donnelly
Ms. Alicia Downey
Mr. Marc Duby
Ms. Ingrid Dudek
Ms. Judith Duffy
Ms. Elizabeth Duggan
Alexandra Dulchinos and
James Benninger
Ms. Christine Dullea
Margaret C. Dumas Trust
Dunkin Brands
Ms. Jennifer Dunmore
William and Kathryn Duryea
Ms. Gail Duso
Ms. Linda Dwinell
Ms. Margaret Eagle
Eaglemere Foundation, Inc.
Ms. Anne Eberle
Ms. Caroline Edwards
Douglas Egan Memorial Fund
Mr. Alexander Eisemann
Marcy Eisenberg
Ms. Julia Elliot
Ms. Vivien Elmslie
The Elsevier Foundation
Ms. Kerry Enos
Anne Fan
Mr. Gary W. Farrenkopf
John and Christine Fennelly
Ross and Kathleen Fenton
Fenways Team
David and Vinita Ferrara
Terrance and Lorraine Fetters
Edward Fey and Grace Kenney Fey
Ms. Denise Fiandaca
Fidelity Investments
Ms. Andrea Finard
Mildred Findeisen

Michael and Cheryl Fitzgerald
 Christopher Fix
 Ms. Elizabeth Franzosa
 Marc and Erin French
 Paul and Janee Friedmann
 Friendly Ice Cream Corp.
 Robin Fryer
 Mr. Dale Galbo
 Dr. Deidre Galbo
 Ira and Anna Galkin
 Diane Gallan
 L.R. Gardiner
 Ms. Wanda Garner
 Ms. Margaret Mary Gavenonis
 Peter and Mary Gens
 Stephen and Megan George
 Dr. Erin S. Geshwiler
 Ms. Sarah Gibson
 Gillette Matching Gifts
 Ms. Sarah Goff
 Mr. Eric Goldberg
 Willie and Vivian Goldwasser
 Ms. Terri Gomes
 Stephen and Kelly Gopoyan
 Mr. Charles Gordon
 Mark and Diane Gould
 Mr. Frank Granara
 Grandin Family Foundation
 Mr. John Greene
 Mr. David Gregory
 Robert and Lynne Grettum
 Richard and Ann Grieco
 Mr. and Mrs. Murray Gross
 Ms. Elizabeth Gruber
 Ms. Emily Guimaraes
 Gordon and Llura Gund Foundation
 Julie Guscott-Schultz
 John and Amy Haley
 Ms. Caroline Hall
 Dr. Lee Hall
 Ms. Helen Hamant
 Ms. Tammy Hamond
 Nancy and John Harding
 Ms. Anne Harris
 Mr. Gordon Harris
 Ms. Gail Hartnett
 Harvard Pilgrim Health
 Care Foundation
 Mr. Michael Hatfield
 Ms. Sara Jane Haven
 Mr. William Havice
 Ms. Melissa Hawley
 Miss Marie Hayden
 J.R. Held
 David and Nedra Hendricks
 Gilbert and Lynn Hennessey
 Mr. Ernest Herrman
 Ms. Audrey Herzig
 Marion Hickman
 John and Julia Hilton, Jr.
 Mr. Phillip Hirsh
 Mr. Robert Hitchcock
 Jacob Hittinger Trust
 Mrs. Julia Hobart
 Peter and Pauline Hoenigsberg
 Ms. Jenn Holden
 Dr. Robin Holtsinger
 Dr. Chantal Holy
 Ms. Mary Elizabeth Hooker
 Ms. Wendy MacDonald Horne
 Eugene and Mary Hornsby
 Howland Family Foundation
 Ms. Marie Huet
 Hurdle Hill Foundation
 Ms. Joanne Hutchinson
 Illinois Tool Works Foundation
 In Honor of Connor
 Ms. Susan Jackson
 Ms. Anna Jeffrey
 Ms. Dana Jewell
 Ms. Catherine Johnson
 Ms. Jennifer Johnson
 Cynthia Jones and John Kachele
 Ms. Meradee Jowder
 Linda and Daniel Kaferle
 Richard and Paulette Kalagher
 Charles and Roberta Kaman
 Charles Kaman Charitable
 Foundation, Inc.
 Charles and Sharon Karp
 Ms. Jennifer Karp
 David and Anna Kasabian
 Warren and Ilana Katz
 Mary Ellen Kawell
 Hon. George and Patricia Keady
 Mr. Alan Kelley
 Ms. Ellen Kelley
 Mrs. Irene Kennedy
 Judy and Bruce Kenney
 The Kerr Family
 Dr. Minta Lee Keyes
 Stephen Kidder and Judith Malone
 The King Family
 Jacqueline Kingsbury
 Ms. Bonnie Kirchner
 Ms. Shelley Kooris
 Dr. Julie Kopser
 Ms. Irene Kozdrowski
 Eben Krim
 Ms. Kerith Kristel-Smith
 Miss Elizabeth Kross
 Richard and Yuxi Kucinski
 Alan and Nola Kulig
 Ms. Ruth Kupfer
 Ms. Helen Hoi Lun Kwok
 Dr. Kathleen Kyle
 Charles LaBrec and Mary Brzezanski
 Ms. Jennifer Lambert
 Mr. Walter Lander
 Ms. Kyle Landt
 Ms. Lee Lanza
 Mr. Joseph Lanzillotta, Jr.
 Mr. Keith Laughman
 Ms. Susan Lavoie
 Mr. Robert Lawrence
 Ms. Diana LeBlanc
 Ms. Nancy Lebwohl
 Ms. Lily Lee
 Mrs. Lisa Lee
 Dr. Edward Leeds
 Ms. Patricia Leighfield
 Ms. Jane Lenarsky
 Mr. Robert W. Lepper
 Sherry and Alan Leventhal
 Ms. Lauren Levine
 Melvin and Barbara Levine
 George and Claudine Lewis
 Ms. Sandra Lipchus
 Jeff and Angela Lipson
 Fred Littleton
 Ms. Joan Locke
 Shawn Logan
 Logan's Heroes
 Ms. Kara Lombard
 Ms. Suzanne Lowell
 Ms. Sarah Luick
 Mr. Michael Lukasek
 Ms. Helen Elizabeth Luke
 Ms. Pamela Lyons
 Ms. Sonya Mackintosh
 Ms. Valerie Madden
 Ms. Martha Maguire
 Brad and Sharon Malt
 Samuel Mandell Foundation
 Mr. Peter Manian
 Ms. Jane Mann
 Ms. Megan Manzo
 Mr. David Margolis
 Donald Correia and Ms. Sonya
 Marques-Correia
 Ms. Jean Marshall
 Ms. Kelly Marshall
 Ms. Meredith Matakanski
 George and Nancy Mathey
 Ms. Gretchen Mauras
 Ms. Maryellen Maurer
 Lainchen McCarthy
 Christopher McElean
 Ms. Joan McNaught
 Ms. Kathleen McQuiggan
 Meeka and Mary O'Day
 Ms. Deborah Mehne
 Paul and Leslie Meinhart
 Ms. Jessica Melgey
 Ms. Barbara Meyer
 Anita Meyer and Andrew Brown
 Mrs. Nancy Meyer Hovey
 Ms. Barbara Snow Meyers
 Microsoft
 Paul and Betty Ann Migliaccio
 Jeffrey and Molly Millman
 Anthony Mirenda and
 Tracey Cornogg
 Miss Marjorie Moerschner
 Ms. Gayle Montgomery
 Mrs. Pamela Moore
 Ms. Janice Moquin
 John and Emily Moran
 Tim and Michele Morin
 Miss Linda Moroni
 Ms. Tammy Morris
 Ms. Nancy Morrisroe
 Jessye Moss
 Allan and Diane Moulton
 Jeff and Michele Mulhern
 Marjorie Murphy
 Mr. and Mrs. Robert Murri
 Muttley Crue
 Thomas and Kathleen Myatt
 Ms. Jessica Myers
 Mr. David Nager & Associates, Inc.
 Daniel and Harriet Needham
 Aaron and Lin Neff
 Ms. Mary Nessralla
 Network For Good
 Daphine Neville
 Ms. Mary T. Newell
 Dr. John Niedzwicki
 David and Melissa Norton
 Ms. Helen Nover
 Ms. Deborah Novick
 NSTAR
 Mr. Keiron O'Brien
 Ms. Cindi Obey
 Joseph and Mary O'Day
 Ms. Diane O'Donoghue
 Ms. Katie Oliveira
 One Beacon Charitable Trust
 Andrew Oneglia and Laura D'Angelo
 Ms. Louise Oremland
 Ms. Valerie Osiecki
 Our Island
 Ms. Pamela Page
 Mr. Saul Palder
 Janice and Tony Palermo
 Ms. Christina Panek
 Hercules Pappachristos
 Ms. Kat Park
 Ira and Jill Parker
 Dr. John Parks
 Party of Pooches
 Anne Paterno
 Paws For the Cause
 Ms. Marie Payton
 The PBH Charitable Trust
 Pearson Education
 Louise Gaylord Pease Trust
 Ms. Mary Pelletier
 Pentucket Lake Elementary School
 Daniel Perry
 Ms. Karen Peterson
 Ms. Tina Petras
 Pets Angels
 Mrs. Marion Phillips
 Ms. Sara Pickett
 Vincent and Christine Pieczek
 Ms. Linda Pilgrim
 Michiko Plimpton
 Mr. Theodore Polansky
 Mr. Scott Pollack
 Lucile and Maurice Pollak Fund
 Dr. William Pollock
 David and Meliss Posell
 Harold and Frances Pratt
 Holly Prentice and Gary Videlock
 Ms. Lara Price
 Mr. Joseph Prior
 Protestant Guild Learning Center
 Pup Bailey
 Putnam Investments
 Albert and Karen Pytka
 Mrs. Cynthia Radauskas Wright
 Randy and Jean Raymond
 Ms. Diane Reid
 Joan Rivet
 Miss Mariah Robbins
 Ms. Gina Robert
 Robert Bader Associates LLC
 Mr. Edgar A. Roca
 Mr. Francis X. Roche
 William and Ellen Roe
 Mark and Suzanne Rondinelli
 Burton and Gloria Rose
 Mr. Richard Rudman
 Ms. Marieve Rugo
 Mr. Michael Russell
 Stephen and Mary Russell
 John Ryan and Claire Mansur
 Dr. Bijan Sadmooori
 Mr. Kenneth Salsman
 Mr. and Mrs. Ralph Sarni
 Mr. Richard Satterfield
 Mr. Ralph Sautter
 Richard and Geraldine Savoy
 Michon Schenck
 Marc Schiller
 Peter and Cynthia Schliemann
 John Schnapp and Rebecca Boxter
 Robert and Catherine Schneider
 Ms. Mary Margaret Schroeder
 Robert and Mary Schwartz
 Seroni, Inc.
 Mr. F. Garrett Shanklin
 Patrick and Maureen Shea
 Shire Pharmaceuticals, Inc.
 Steve Shulman and Debra Yanofsky
 Mr. David Siegel
 James and Carolyn Silva
 Mr. Charles Silver
 Scott and Aileen Simpson
 Theodore Sims and Linda Bui
 Ms. Dara Singleton
 Carla Skinder and Jon Woodhull
 Larry and Jeannette Small
 Mr. John Smith
 Lee and Kathleen Smith
 Snigs and Bolinski

Ms. Faith Snyder
Susan Soergel
Ms. Allison Sonfist
Ms. Lauren Sorrento
Sorrento Lactalis, Inc.
Mr. Michael Soule
The South End Buttery
The Spooky Walkers
Richard and Doris Stanley
Ms. Heather Steede
Ms. Mary Ann Stevens
Raymond and Fay Stevens
Mrs. Peggy Sturtevant
Ms. Dorothy Sullivan
Mr. Joseph Sultan
Superior Nut Company, Inc.
Sheryl Swankin, D.V.M.
Timothy and Patricia Sylvia
Tails On Trails
Ms. Alice Tam
Maria Tammick
Jennifer Taylor
Taylor, Duane, Barton & Gilman LLP
Team Bag Lunch
Team Bailey
Team Bootsie
Team Charlotte
Team Duncan and Company
Team Hump
Team Willy and Jenny
Mr. Richard Tennant
The North Parish
Therault Family
John and Dorothy Thorndike
William and Geneva Thorndike
John and Jane Tisdale
Ms. Laura Tomasetti
Calli Towne
Tropical Paradise
Two Girls, A Guy and 2 Wicked
Cute Dogs
United Way of S. E. New England
Mr. Robert A. W. Van Giels
Ms. Linda Varteresian

Pauline Gherson and Claire Vaughan
Mr. John Vault
Mr. Peter Vengryn
Ms. Kristen Verdeaux
Verizon Foundation
Veterinary Dental Services
Ching-Man Virbasius
Mr. Jonathan Vogel
Mr. Don Vose
Ms. Andrea Coyle Wadell
Ms. Martha Wadleigh
Wag This Way
Ms. Cheryl Walker
Barbara Wallraff and Julian Fisher
Ms. Cheryl Ward
Mr. Reid Warnock
Anna Bell Washburn
Ms. Darlene Wastal
Ms. Karen Watkins
Bill and Joanne Watson
Ms. Loretta Wawrzyniak
Mr. Henry Weaver, Jr.
Jean Weber
Ms. Margo Wereta
Ms. Jennifer Westfall
Ms. Carol Wheeler
The Whitaker Foundation
Ms. Christine White
Gerry and George White
Sarah White and Steven Rudolph
Mr. Royce Williams
Mr. Michael Williams and
Cathy-Ann Paige
Ms. Sarah Wilson
Ms. Virginia Wing
Richard and Linda Winslow
Mr. and Mrs. David Wolff
Dennis Wolkoff and Susan Coolidge
Richard and Natalie Woodbury
Mrs. Eleanor M. Worth
Ms. Paula Wright
Ms. Stephanie Yirikian
Ms. Margaret Yopak
Gary and Joyce Young

Ms. Kathleen Young
Peter and Katherine Younger
Ms. Lauren Youngquist
Jane Youngren
Mr. Eugene Zak

\$250 - \$499
Anonymous (3)
Mr. David Aalto
Robert and Susannah Abbott
Ms. Camille Abraham
Mr. Kenneth Abrams
Robert and Claudia Abramson
Robert and Ingrid Adam
Ms. Kyle Adamonis
Curtis Adams and Toni
Chancellor-Adams
AEW Capital Management L.P.
Ms. Gianluca Aiello
Ms. Virginia Aisner
Ms. Janet Albrecht
Mr. Herbert Alexander
Miss Connie Alkins
Ms. Judith Allen
Ms. Nancy Allen
John and Anne Marie Allison
The Allstadt Companies LLC
Mrs. Robert Almy, Jr.
Ms. Jo-Ann Altmark
Ms. Iliana Alvarado
Tony and Jen Alves
Walter and Catherine Alves
Scott and Cathy Ames
Ms. Helen Anders
Ms. Martha Andersen
Ms. Cara Anderson
David and Linda Anderson
Ms. Sarah Anderson
Ms. Sandra Andrukonis
Ms. Jessica Anthony
Mrs. Karen Ardente
Arlington Dog & Cat Hospital LLC
Ms. Carolyn Arnish
David and Cheryl Arnold
Ms. Ellen Arnold

Ray and Arlene Arruda
Paul and Jane Athanas
Mr. Norman Aubrey
Aurora Borealis
Tom and Debra Austin
Donald and Elizabeth Avery
Ms. Susan Avery
Robert and Patricia Bach
A.E. and Maxine Badgett
Ms. Sally Baer
Walter and Donna Baigelman
Mr. David Bailey, Jr.
Ms. Jodi Bailey
Bailey & Seamus
Mr. Kenneth Ballou
Mr. Joe Bamberg
Ms. Ruth Band
Scott Bankhead, D.D.S.
Ms. Margaret Barlow
Ms. Maureen Barlow
Frank and Norma Barmakian
Ms. Barbara Barnes
Nancy Barnes and Eleanor Fennessy
Ms. Peggy Barrasso
Ms. Beth Barrett
Christopher Barrett and
Christen Puglia
Mr. Robert Barro
Michael and Amy Barron
Bartizan Connects
Richard and Ruth Bartlett
Paul and Karen Bartnicki
Basenji Companions
Michael and Katherine Bassick
Ms. Anne-Marie Batchelder
Gordon and Joan Battye
Ms. Marcy Baughman
Jennifer Baxter
Ms. Lynn Bayless
Ms. Molly Beals
John Beardsley and
Mary Etta Schneider
Mr. and Mrs. William Beattie
Ms. Laura Beaudry

Ms. Bonnie Bednarz
Ms. Phyllis Beers
Ms. Linda Beggs
Charles and Gail Belanger, Jr.
Ashley Bell
Ms. Chrissy Bellos
Helen Bellows
Ms. Holly Belsky
Ms. April Bender
Ms. Christine Benoit
David and Dorothy Benoit
Ms. Shirley Benson
Ms. Maggie Bergin
Ms. Carin Berletic
Bessemer Trust Company
Mohit Raj Bhatia
Amy Billings
Daniel and Nancy Bills
Ms. Amy Bizon-Gopp
Ronald Blake and Dorothy Moore
George and Barbara Blanchard
Ms. Andrea Blesso
Jeff and Donna Bliss
Mr. and Mrs. Charles Boit
Ms. Amanda Booth
Ms. Anne Booth
Boston Bulldogs
Ms. Judith Bostrom
Ms. Dorothy Bourassa
Wesley and Barbara Bowman
Dean M. and Kathleen Boylan, Sr.
Kiko Bracker and Kara Holmquist
Ms. Denise Braddock
Timothy Bradford and Adrienne
Holmes Bradford
Ms. Jeannette Bragger
Ms. Jenn Brandel
Thomas and Susan Brando
Ms. Sharon Bratton
Ms. Lyn Braz
Mr. Arthur Brecher
John and Barbara Breck
Ms. M. Constance Breck
Ms. Patricia Brent

Ms. Joan Bresnahan
Mr. Stephen Brewer
Ms. Martha Brezina
Ms. Alice Briggs
Ms. Judith Brink
Gretchen Brockhaus
Richard and Mary Ann Broderick
Brookline Grooming
Brookline Lodge of Elks # 886
Brooks School
Mr. and Mrs. Clifford Brown
Dr. Douglas and Ms. Susan Brum
Ms. Allison Bryant
Bubber's Brigade
James and Nancy Buchanan
Mr. Sheldon Buckler
Ms. Laurie Buckley
Ms. Linda Buckley
Mr. David Buell
Jen and Pat Buonopane
Marie Buonopane and Diane Rogers
Thomas and Jennifer Burke
Mr. Aaron Burnett
John and Dawna Burns
Ms. Debra Butler
Ms. Lauren Butler
Ms. Maureen Butler
Mr. and Mrs. T. Edward Bynum
Ms. Jean Cabana
Ms. Holly Cable
Ms. Joanie Cacciola
Ms. Una Cain
Ms. Krista Calderone
Ms. Patricia Caldwell
Ms. Maryellen Callahan
Mr. Donald Cameron
Tandy and Daniel Camilli
Ms. Gail Campbell
Ms. Heather Pars Champion
Margaret and Robert Canevazzi
Ms. Deborah Canty
Cape Cod Times
Ms. Christiane Cappadona
Captain Minus and Lucky

Ms. Suzanne Carbone
Ms. Torrey Card
Ms. Kelly Carden
Caritas St. Elizabeths Medical Center
Doug and Barbara Carlson
Jim and Sandy Carney
Mrs. Catherine Carpenter
Mr. Ralph Carpenter, Jr.
Mr. David Carroll
Ms. Susan Carroll
Ms. Andrea Caslowitz
Ms. Jane Cataldo
John and Kristin Cataldo
Ms. Margaret Ann Cavanaugh
Mr. Philip Cavaretta
Cazenovia College
Paul Cerqua and Heidi Goddard
Mr. and Mrs. Richard Chafee
Ms. Virginia Chapin-Sheff
Mrs. Mary Chapman
William and Ellen Chapman
Mr. Steve Berlin Chavez
Helen Chesworth
Ms. Janice Chick
Chip's Welding & Heavy
Equipment Repair
Ms. Antonie Chute
Ms. Lisa Ciampa
Mr. David Cimma
Ms. April Clark
Douglas and Elizabeth Clark
Mrs. Frances Clark
Ms. Paula Clark
Denise Cleghorn
Ms. Kristine Clerkin
Charles Coates, Jr.
Ms. Stephanie Coghlan
Mr. Howard Cohen
Cathie Coker
Judie Coleman
Ms. Ann Porter Colley
Mr. Stephen Colley
Alex and Carolyn Collier
Mrs. Kathleen Collins

Mr. Ronald Collins
Ms. Marlies Comjean
Ms. Amy Conley
Ms. Elaine Consalvo
Consumer Education Services, Inc.
Mr. Brad Cook
Ms. Cindy Cooke
Mr. Geoffrey Cooper
Kenneth and Mary Lou Cooper
Mr. Joseph Cormier
Ms. Everett Corson
Ms. Judy Cote
Laurence Cote
Ms. Linda Cotone
Ms. Amanda Cotter
Robert and Sylvia Cotter
Elyanna Coutracos
Nancy Creed
Ms. Susan Crimmins
Jamie Crivello
Mr. John Crocker
John and Susan Cromidas
Thomas and Cecelia Croyley
Croutons Fan Club
Frank and Barbara Cuiffo
Wendy and Bob Cuiltice
Robert and Sandra Cummings
Dr. Carol Curry
Ms. Pamela Curtin
James and Katherine Curtis
Mr. and Mrs. R. C. Cushman
Ms. Nancy Cutler
Ms. Jill Czarnowski
Miss Susan Czimmel
Ms. Davida D'Abate
Daisy's Girls
Ms. Janice Daley
Mr. Jonathan Dallas
Ms. Elsa Damon
Ms. Adeline D'Amonville
Linde and Joseph D'Andrea
Murray and Judith Danforth III
Mr. Allen David
Mr. Louis David

Mr. Bruce Davis
Ms. Jacquelyn Davis
Ms. Jessica Davis
Ms. Lauren Davis
Marc and Mary-Jane Davis
Ms. Jaclyn Daylor
Mr. Jim Delaney
Celeste Delpidio
Ms. Helen Denny
Mr. Karl Densmore
Mr. Alfred DePaoli
Nicholas DeVito
Karin Devlin
Dr. Lynn Dgetluck
Mr. Arthur Dickey
Mr. Laurence Dickinson
Ms. Rebecca Dicks
Ms. Rosie DiFrancesco
Mr. James DiLoreto
Mr. Paul DiMaura
Dennis and Diane Dion
Ms. Carol DiPietro
Richard and Joanne Dirienzo
Ms. Susan DiTroia
DJRJ Charitable Fund
Daniel and Karen Dodd
Dog Days & Nights
The Dogerrifics
Doggie Day Pet Services
Mrs. Muriel Doliber
Henry and Maryanne Domain
Dominion Foundation
Ms. Madonna Donahue
John and Carolyn Donatini
Doncasters, Inc.
Ms. Laura Donohue
Double Main Management Co. LLC
Ms. Anne Dowd
Ms. Sheila Downs
Mr. Richard Dragon
Ms. Anita Dranetz
Mr. Blair Dubak
Ms. Gina Dubel

Michael Duca and
Jacqueline Blombach
Ms. Erin Duffy
Matthew C. and Julie Dugas
Ms. Michelle Dumas
Ms. Meredith Dunn
Ms. Jen Dupras
Ms. Patricia Durning
Paul and Christine Dziengelewski
Ms. Robin Earle
Eastern Bank Charitable Foundation
Ms. Karen Edlund
Timothy Eisaman, M.D.
Steve Elliott and Anne Withers
Ray Ellis
Ms. Jenna Emmons
Mr. Dale Enos
Steven and Jane Erikson
Ms. Cynthia Esposito
Ms. Paula Evans
Dr. Clyde Evans and
Barbara Marchilonis
Thomas Evans and James Gardner
Ms. Linda Falch
Ms. Antoinette Fallon
Mr. Lawrence Falvey, Jr.
Ms. Carolyn Famiglietti
Ms. Mitra Farmand
David and Betty Farrell
Ms. Margaret Farrell
Ms. Marita Farrell
Ms. Melissa Farrington
Mr. Robert Faulkner
Andrew and Michelle Feinberg
Ms. Nina Feldman
Laurie Feldman and Stephen Koster
Felicia (Cat) and Girlie (Dog)
Mrs. Sarah Cavanaugh Ferguson
Ms. Melissa Fiatarone
Paul and Diane Fiejdasz
Irwin and Jeanne Fireman
Ms. Eliza Fischer
Ms. Tracy Fischer
Bonnie Fisher

Ms. Ruth Fisher
Mr. Bruce Fishman
Bob Flack and Frances Forman
Ms. Aine Flanagan
Ms. Patricia Flanagan
Ms. Patricia T. Flanagan
FleetBoston Financial Foundation
Ms. Susan Fleming
Mr. Chris Fletcher
Ms. Nicole Flynn
FMASNH
Ms. Jen Fogelson
Patrick and Chadine Ford
Mr. Shawn Forest-Ussach
Ms. Frances Forte
Ms. Sara Foster
Ms. Cynthia Fox
Ms. Gretchen Fox
Ms. Victoria Fox
Ms. Jennifer France
Michael and Susan Franconi
Mr. Fred Frankel
Donald and Beryl Fraser
Ms. Sara Frazier
Freeman Company
Ms. Marcy Fregault
Ms. Gladys Frias
Friendly's Ice Cream
Frank and Marianne Frodyma
George and Dana Frye
Furry Friends
W. Arthur and Lorraine Gagne
Charles and Constance Gagnebin III
Robert Galeski
Dr. Jack Gallagher
William Gallagher Associates
Insurance Brokers, Inc.
Ms. Rebecca Garnett
Ms. Dorothy Gates
Stanley and Dorothy Gawle
Ms. Kathleen Gehl
Peter Gelhaar
Mr. John Gell
Taco Geoghegan

Ms. Debra Gervais
Ms. Diane Ghalbouni
Mr. Anthony Giarrusso
Robert Gibbons and K. Ruth DeLay
Harold and Jana Giguere
Jillian Gillespie
Mary Gillette
Ms. Elizabeth Gillis
Ms. Rebecca Gilman
Ms. Barbara Ginader
Ms. Maggie Glaser
Mr. and Mrs. Robert Gledhill
Ms. Astrid Glynn
Good Dogs Wear Black
Ms. Annette Goodro
Ms. Julie Gordon
Ms. Susan Gothing
James and Paula Gould
Ms. Mary Grace
Ms. Constance Graham
Mr. Seth Grandeau
Mrs. Constance Grayson
Ms. Melissa Graziano
Ms. Sharon Greco
Ms. Ranen Green
Ms. Tracey Greenwald
Irene Greif and Albert Meyer
Ms. Sandra Grieco
Ms. Mary Griffin
Ms. Maura Griffin
Ms. Maureen Griffith
Ms. Barbara Grimm
Alden and Frances Grove
Ms. Patricia Kenyon Guditz
Mr. Ronald Guest
Ms. Mary Ann Gundersen
Ms. Rosalind Gwozdz
Ms. Natalie Haar
Mr. Michael Hadley
Ms. Isabella Haegg
Ms. Kate Haffner
Ms. Cynthia Hahn
Ann Hale
Amy Haley

Ms. Laverne Halfkenney
Mr. Travis Halliday
Ms. Lisa Maria Hally
Mr. David Halpert
Mrs. Barbara Halpin
Mr. Robert Hamilton
Eugene Hamilton Trust
Ms. Susan Hancox
Julia Hand
Thomas and Mary Hanisco
Hannaford-Waltham
Mr. Jonathan Hanson
Happy Tails
Ms. Ellen Haranas
Dr. Alan Harris
Mr. Kenneth Harvey
Mr. Scott Harwood
Ms. Tobey Hasegawa
Mr. Stanley Haskell
Gayle Haskell and Elaine LaBelle
Mrs. Nancy Hatfield
Ms. Maggie Hawes
Sarah Hawthorne and
Gregory Rotman
William Healey
Mr. Gerald Healy
Richard and Heather Leigh Heater
Ms. Ann Heffernon
Kenneth and Sally Heffron
Ms. Helen Heitman
Ms. Susan Heleotis
Ms. Laurel Henderson
Ms. Janice Henry
J. Herchak
Ms. Corinna Hetteringer
Hewlett-Packard Co.
Ms. Deborah Hildebrandt
Michael and Nancy Hinds
David and Ree Hirsch
Richard and Gertrude Hirsch
Mr. Edward Hobart
Mrs. Susan Hobbs
John and Sharon Holdner
Ms. Jennifer Hollenstein

Ms. Bonita Holley
Mr. Richard Hollworth
Ms. Viola Holmgren
Homesite Home Insurance
Steven and LeeAnn Horner
Ms. Patricia Dolan Horowitz
Mrs. Catherine Horsmann
Stacy and Robert Horte
Brian Hotchkiss and Peter Blaiwas
Mr. James Houghton and
Connie Coburn
Mrs. Gertrude Hould
Ms. Catherine Howland
Ms. Nancy Lyle Howland
Ms. Paula Hoyt
Mr. Kenneth Harvey
Ms. Susan Hughes
Thomas and Patricia Hughes
Ms. Mary Hull
Ms. Julia Defrees Humphreys
Ms. Christine Hunt
Ms. Krystal Hunt
Ms. Julie Hurd
Hurdle Hill Foundation
Tracy Thrasher Hybl
I Do Foundation
Ms. Barbara Ann Iandolo
David Ingalls
Ira's Team
Mr. Peter Iwanow
Michael Izdepski and James Couchon
Joyce Jablonski
The Jack Pack
Ms. Susan Jackson
Kenneth and Karen Jacobsen
Mr. Michael Jaffe
Ms. Martha Jamison
Ms. Sally Ann Janulevicus, Esq.
W. Jarvis
JB Property Solutions, Inc.
Miss Anna Jeffrey
Ms. Kathy Jenkins
Paul and Debra Johnson
Stephen and Joni Johnson

Mr. Thomas Johnson
Marsha and Bill Johnston
Randall and Karen Jordan
Christopher and Patricia Joyce
Ms. Jacqueline Jung
James and Lynda Juppe
JustGive.org
Faith Justice and Robert Moote
Jeffery and Lynda Kaplan
Jonathan and Heidi Kaplan
Ms. Lois Karfunkel
Ms. Estrellita Karsh
Mr. Elliot Katzman
Mr. Joshua Kaufman
Ms. Susan Kaufman
Ms. Sue Kazanas and
Mr. Cushing Anderson
Thomas and Pamela Keenan
Ms. Carol Kelleher
Ms. Deborah Kelley
Ms. Kathleen Kelliher
Mrs. Eleanor Kelly
Ms. Erin Kelly
Maureen Kelly
Ted Kelly
Anne Kelly and Adam Reeves
Krzysztof and Henryka Kempa
Ms. Susan Kennedy
Milford and Marjorie Kenney
James and Donna Keough
Ms. Donna Kessel
Ms. Jaime Kidston
James and Patricia Kielley
Ms. Kim Killen
Ms. Amy King
Mr. Thomas King
Ms. Mary Kinsell
Gerald and Patricia Kirschner
Hon. S. Herman Klarsfeld
Mr. Ernest Klein
Jerome and Linda Klein
Paul and Rita Kleiner
David and Katherine Kloss
Mr. Steve Knapp

Anthony and Dawn Knights
Peter and Isabel Knowlton
Robert and Joan Kocak
Ms. Susan Koegler
Mr. Frederick Konopka
Ms. Connie Koralishn
David Korman and Abby Flam
Albert and Eleanor Korsak
Joseph and Edna Kotomski
Ms. Barbara Kovacs
Mr. Arnold Krasner
Mr. Michael Kutter
Ms. Rosemary Kverek
Lady's Buddies
Ms. Meghann Lafferty
Mary Lambert
Ms. Patricia Lambert
Ms. Elaina Lambkin
Ms. Carol Lamica
Ms. Yvette Landry
Gene and Sylvia Landy
Ms. Joan Lapham
Ms. Kyla Jean LaPierre
Dr. Nancy Laste
Ms. Cornelia Latham
Ms. Rosemary Lavelle
A. James and Jay Ann Lavoie
Michael and Elizabeth Lawler
Aaron and Louise Lazare
Mr. William Leaf-Herrmann
Jennifer Leaning and Ruth Barron
Ms. Brigit Leary
Henry and Mary Lee
Noele Lee
Mr. Richard Lee
Joseph Leghorn and
Dorothy Desimone
Harvey and Eveline Leighton
Ms. Roderick Leitzes
Lorrie Lejeune and
Jonathan Wenocur
Mr. Alan Lemieux
Rob and Monica Lender
Eileen Leonard

Ms. Jane Leopold
Ms. Christine Leslie
Phillip Leung and Pamela Au
Ms. Joan Lewis
Mr. Eric Liberman
Ms. Allison Liberto
Ms. Amanda Ligatti
Hongping Lim
Ms. Roberta Limoli-Barufaldi
Ornoth Liscomb
Ms. Eleanor Livingston
Whe Yong and Shi-Lung Lo
Mr. Gregory Lombardi
Ms. Sylvia Long
Long Ears and Labcoats
Ms. Rita Looby
Loomis, Sayles & Company
Mr. Robert Lopes
Alana and Sandra Lopez
Mr. Peter Lorey
Ms. Pamela Lough
Ms. Sharon Lowe
Walter and Dawn Lowe
Elizabeth Lowry and William Lawson
Ms. Helen Lozoraitis
Geoffrey and Erin Lubien
Maureen and Barbara Lucey
Mrs. Merloyd Ludington
D. Lukac
Diane Luken
Ms. Janice Lulu
Ms. Tasha Downing Luvisi
Ms. Joan Lynch
Mr. Kevin Lynch
Michael and Sandra Lynch
Ms. Katie Mack
Mrs. Kathleen MacNeish
Maggie & Mutt Mafia
Ms. Grace Maggio
Ms. Adora Maharaj
Mrs. Christine Mahoney
Robert and Kathleen Mahoney
Kathleen Maki and Kasi Ferro
Emily Mallard

Mr. Benjamin Mann, Jr.
Mr. James Mann
Stephanie Manning
Jeannette and Gerard Marchand
Jerry Marchand
Kerry Marchant
Mr. Anthony Margolis
Ms. Prudence Markos
Ms. Louise Marlow
Ms. Melissa Marshall
Ms. Julia Martinescu
Ms. Morgan Mason
Massachusetts Behavioral
Health Partnership
Ms. Karen Massone
Ms. Sharon Matland
Matrixchem, Inc.
Ms. Suzanne Matulis
Ms. Deborah Mauger
Ms. Samantha Maurer
Mazzilli's Farm Stand
Dr. Edward McCall, Jr.
Ms. Carolyn McCane-Chin
Ms. Mary McCarthy
Paul and Wladzia McCarthy
Ms. Phyllis McCarthy
Thomas and Emily McClintock
Ms. Laura McCloskey
Ms. Allyson McDonald
Mr. Fred McDonough
Ronald and Karen McKinstry
Mr. Thomas McLaughlin
Mrs. Margaret Allen McLellan
Ms. Mary McManama
Ms. Karen McMillen
Marcia McMullen
Ms. Linda McNeil
Ms. Virginia McNeil
Thomas and Karen Meler
Mr. Richard Mendes
Ms. Corinne Messenger
Constance Messmer
Ms. Patricia Metcalf
Ms. Catherine Meyer

James and Paula Meyer
Ms. Jill Meyers
Ms. Catherine Michaud
Diane Middendorf
Midmark Corporation
Peter Miele and Christine Sampson
Ms. Deborah Mikhitarian
Forrest and Sara Milder
Mr. Andy Miler
Ms. Tracy Militello
Dan Miller
Ms. Gabrielle Miller
Walter and Elizabeth Miller
Mr. Mark Milligan
Millipore Foundation
Ms. Jean Mitchell
Ms. Stefania Mitrano
Ms. Karen Modestino
Ms. Karen Molinaroli
John and Yumiko Molloy
Mr. Robert Monaco
Ms. Joan Monahan
John Monahan and Olga Giraud
Ms. Ashley Mondragon
Ms. Lisa Monks
Pamela Monterosso
Carlene Moore
Ms. Ann Moorehouse
Ms. Cynthia Moran
Ms. Mary Ruth Moran
Ms. Janet Morehouse
Nicole Morgan
Robin Morgasen
Ms. Kathleen Moriarty
Miss Michele Moriarty
Ms. Carolyn Morrill
Ms. Alice Zeller Morris
Ms. Kate Morris
Mr. Michael Morris
Ms. Nancy Morrison
Ms. Phoebe Mossey
Linton and Jane Moulding
Ms. Susan Moulton
Ms. Kerri Moynihan

Mr. and Mrs. Curtis Mueller
Ms. Sharon Mulcahy
Gina Muldoon
Dr. John Mulliken
Pieter Muntendam
Mr. and Mrs. Kevin Murphy
Estate of Priscilla Murphy
Ms. Caitlin Navin
Tara and Keith Neal
Mrs. Julianne Neaverson
James and Marion Nelson
Mr. John Nelson, Jr.
Ms. Kathi Nelson
David Newsom
Clifton Ngan
John, Mary and Susan Nickerson
Mr. Peter Niemitz
Ms. Rachael Nigro
Steve and Nora Nikola
Noah's Bark
Mr. Stephen Nobile
Carol Nohelty
Ms. Marcela Noonan
Herman and Janet Nydam
John and Margaret Nystrom
Ms. Janine O'Brien
Ms. Kathleen O'Brien
Mr. Keiron O'Brien
Ms. Leslie O'Callaghan
William and Marjorie O'Callaghan
Ms. Debra O'Connell
Donna O'Connell
Joseph and Anne O'Connell
Ms. Heather O'Connor
Ms. Doris O'Kane
Brian and Susan O'Keefe
Olaf's Buddies
Ms. Tricia O'Leary
Robert and Carol Oliver
Theodore and Nancylee Oliver
Oracle
Edward Orenstein and
Rosanna Sattler
Ms. Joan Keogh Orlando

Ms. Uma Das O'Toole
Mrs. Edith Overly
Ms. Kiirja Paananen
Mr. Michael Pailhes
Miss Emily Paley
Mrs. Diane Palmer
Ms. Pam Palmer
Ms. Mary Paolino
Ms. Carmelo Paratore
Ms. Dawn Parker
Ms. Janice Parker
John and Charlene Parker
Eliot and Priscilla Parkhurst
Mrs. Colleen Parslow-Reed
Ms. Lynda Parsons
Ms. Lynne Paschetag
Ms. Mildred Pasek
Alan Pasnik and Cynthia O'Neil
Ms. Amy Pasquale
Murray and Eileen Patkin
Ms. Gail Patt
Roger and Joan Paul
Paw In Hand
Paws For A Cause
Paws In Motion
Francine Pennino
Ms. Barbara Perkins
Barbara Curran Perkins
Dr. Elizabeth Perkins
Alexander and Diana Peselman
Mr. Peter Petas
Ms. Ann Peters
Ms. Arianna Photopoulos
Ms. Kate Piccolo
Ms. Kristen Piccolo
Ms. Julie Pierog
Ms. Kate Day Pierson-Freeman
Jean and Robert Pietrillo
Richard and Mary Pigott
Ms. Barbara Pike
Ms. Alyn Pinkofsky
Ms. Cathy Plesha
Mrs. Judith Plotkin
Richard and Linda Plummer

Ms. Laurie Pocher
Mr. Daniel Poisson
Ms. Maria Polanchek and
Ms. Kathy Polanchek
Marie Polcari
Mr. Anthony Pollino
Ms. Felicity Pool
Mark Popovsky and Andrea Lavender
Ms. Susanna Porte
Janis Porter and Stephen Naber
Positive Rewards Training
Ms. Sandra Potito
Ms. Mary Jane Powell
Ms. Myra Jean Prella
Master Griffin Michael Prescott
William and Suzanne Presley
Mr. Daniel Price
Proven Process
Products With Purpose
Mrs. Malinda Pulicari
Jessica Purcell
Ms. Constance Putnam
Regina and Thomas Pyle
Ms. Susan Quinn
William Quinn and Anita
Pascucci Quinn
Michael Quinn and Ellen Deibert
Ms. Pilar and Ms. Isabel Quintana
Ms. Lisa Rabinovitz
Rach's Team
Ms. Amy Ralph
Mr. Bill Ramon
Ms. Karen Ramone
Ms. Joanne Randall
Mr. William Ratcliff
Peter and Hillary Rathjens
Ms. Susan Cooper Rauch
Raytheon Integrated
Defense Systems
Cynthia and Sheila Reardon
Ms. Alison Reaser
David and Lynne Redonnet
Mr. Michael Redstone
Heather Reed

Ms. Sharon Reed
Mr. and Mrs. Theodore Reese III
Mr. Gregg Regan
Mr. Barry Reich
Carl and Peggiann Reilly
Ms. Patricia Reilly
Ms. Elizabeth Reney
Ms. Barbara Reynolds
Ms. Sarah Reynolds
Ms. Sherry Reynolds
Ms. Norma Ricci
Ms. Michelle Richard
Mr. Jeffrey Richardson
Methuen Richdales
James and Lynn Richmond
Ms. Lyndsay Richmond
Mary Richmond
Ms. Katherine Rielly
The Risk Transfer Insurance
Alliance LLC
Rockland Trust Company
William and Penelope Rodday
Edward and Mary Rodgers
Mr. and Mrs. Stephen Rogers
Mr. Paul Romary
Ms. Lucienne Ronco
Ms. Christine Root
Nicholas and Ruth Roschak
Dr. Stanley Rose
Rosie's Team
Dr. and Mrs. Don Ross
Ms. Anne Rossi
John and Bonnie Rossi
Ms. Amy Rossiter
John and Martina Roth
Mr. Stephen Rothman
Jason and Elizabeth Rowbotham
Ms. Leslie Rowell
Ms. Sarah Roxburgh
Joan Rubin
Mr. Curtis Rudbart
Leonard and Sondra Rudofsky
Ms. Carolyn Ruech
Dr. Debbie Sue Ruelmann

Thomas and Jeanne Ruggles
Mr. William Ruhl
John and Ally Rush
Louis and Joanne Rusitzky
Ms. Agalia Rutherford
Mr. Robert Rutkauskas
Mr. and Mrs. Dawson Rutter
Ms. Mary Jane Ryan
Mr. Gary Rzab and Janine Parker
Ms. Catherine Rzepela
Mr. Michael Sachs
Richard and Dawn Safton
Richard and Karen Sakakeeny
Ellen Salsman
Kenneth Salsman
The Samoset School P.T.O.
Ms. Anita Sanders
Sandy Paws
Ms. Kelly Sarandis
Ms. Nancy Sargeant
Ms. Theresa Sarno
Mr. and Mrs. Suri Sastrri
Mr. David Satin
Ms. Shirley Saunders
Kathy Savesky
Richard and Sandra Sawyer
Blyth Saye
Ms. Dyanne Scagliarini
Ms. Mary Scally
Ms. Janet Scangas
Ms. Betty Scatamacchia
Carl and Margaret Schattgen
Ms. Heather Schirmer
Mr. Paul George Schmiro
Mr. David Schmoyer
Ms. Cheryl Schreindorfer
Miss Kristine Schroeder
Schwab Charitable Fund
Mr. Hal Schwartz
Ms. Jessica Scott
Mr. Kenneth Scott
Marc and Christine Scott
Scottie Connection LLC
Mrs. Barbara Sears

Ms. Enid Seaver
Ms. Emily Selland
Ms. Paula Serabian-Lizotte
Mr. and Mrs. Roger Servison
James and Mary Severino
Eleanor Sexton
Ms. Joan Shafran
Ms. Kathleen Shamban
Benjamin and Adele Shambaugh
Ms. Mary Shannon
Robert and Mary Shannon
Mr. John Sharp
Ms. Haley Shaw
Henry Shaw
Ms. Jennifer Shaw
Mr. Richard Shea
Stephen and Linda Shea
David and Jennifer Sheehan
Ms. Christine Sheil
Ms. Jennifer Sherman
Ms. Susan Shubitowski
Mr. Norman Sieman
The Simons Family Foundation
Ms. Linda Simulavich
Mr. William Singleton, Jr.
Saravanasundar Sivaraman
Ms. Lindsay Skaff
Ms. Rebecca Skubel
Barry and Susan Slosberg Fund
Ms. Gail Slotnick
Robert and Jane Smiley
Mr. Coby Smith
Fred and Martha Smith
George and Louise Smith
Ms. Janet Smith
Ms. Kimberly and Ms. Elizabeth Smith
Mr. Stephen Smith
Ms. Susan M. Smith
Ms. Susan W. Smith
William and Marcia Smits
Lee and Joyce Snodgrass
Ms. Louise Snow
Eric Snyder
Ms. Mary Snyder

Ms. Karen Sollins
Ms. Karen Solomon
Ms. Carolyn Sorrento
Ms. Eve Sorum
Jesus and Rebecca Sosa
Ms. Alicia Southwell
Anthony Souza
Ms. Wendy Spannagel
Rachael Sparks
Ms. Jane Spencer
Mr. David Spink
Ms. Kathy Spierer
Ms. Marcia Sprague
Vikram Srimurthy
Ms. Frances Srulowitz
Mr. Charles Stahley
Ms. Anne Starr
Ronald and Helga Starr
Dr. Suzanne Starr
Ms. Gail Steel
Ms. Christine Stein
Ms. Jenny Stern
Miss Margaret E. Stickell
Ms. Sara Stinson
Peter and Lisa Stone
Michael and Nancy Strong
Carol Struthers
Gilbert and Anne-Marie Stubbs
Ms. Heidi Stuck
Mr. Roger Sturtevant
Ms. Josephine Stuto
Jaime Suk
Mr. Richard Sullivan
Robert and Gladys Sullivan
The Sun Microsystems
Foundation, Inc.
Mrs. Lindsey Sundberg
Super Pals
Ms. Eliska Suryckova
Ms. Kathleen Sweeney
Waters Symantec Corporation
Mr. John Szegda
Donat and Jan Szparaga
Lynne Tabor and Dorett Hope

Mac Jeffery and Maki Takano
Ms. Cheryl Talcof
Eugene and Barbara Tallone
David and Katherine Tansey
Mr. Michael Tarshi
Ms. Vicki Tate
Ms. Sandra Taylor
Team Dino
Team EPS
Team Goodbread
Team Grizwald
Team Howie
Team Ivan and Fang
Team Kaufman
Team Liberty
Team Munnmunnamoo
Team O'Neil
Team Summer
Team Yac
Mr. and Mrs. Richard Teller
Ms. Jennifer Tempesta
Temple Beth Avodah
Religious School
Temple Shalom of Newton
James and Barbara Testa
Ms. Denise Thayer
Mrs. Diega Therrien
Mrs. Roberta Thomaie
Mr. John Thomas
Ms. Kristen Thomas
Marie Thomassian
Mr. Edmund Thompson
Gregory and Heidi Thompson
Patti Thompson and John Ellenberger
William and Elizabeth Thorndike
Mr. Lester Thurow
Steven and Lisa Tirrell
Danuta Toklowicz
Placido and Janice Tomaselli
Mr. Richard Tominsky
Leo and Mary Topjian
Ms. Raffaella Torchia
Ms. Barbara Tornow
Stokley and Jeanne Towles

Mr. James Towne III
Carl Huber and Linda
Trachtenberg-Huber
Matthew and Elizabeth Tracy
Barry Trailer
Mr. and Mrs. Stephen Traynor
Ms. Linda Trent
Albert and Elizabeth Trifone
Trinity Episcopal
Ann and Richard Trull
Ms. Frances Tuttle
Twenty Plus Foundation, Inc.
Tyco Employee Matching
Gift Program
Matthew and Zhanna Ullman
The Underdogs
United States Postal Service
United Way Special
Distribution Account
Mrs. Clara Urbahn
Ms. Donna Utakis
Ms. Paula Vaccaro
Ms. Rebecca Vail
Linda Van Marter, M.D.
Ms. Beverly Van Orman
Mr. David Vandervoort
Vans
Ms. Jodi Vautrin
Angela Ventola
Mr. Francois Vigier
Mr. and Mrs. Jay Virshbo
Alan Vlach and Ann Luther
Ms. Lynn Volpini
Wachovia Corporation
Emily Wagner
Edward and Therese Walata
Ms. Barbara Walker
Ms. Jan Walker
Mrs. Sharon Walkey
Ms. Ann Marie Wallace
Ms. Julie Wallace
Mr. Michael Wallace
Walnut Hill Foundation
Ms. Marcia Walsh

Michael and Pam Walsh
Andrew and Jane Ward
Sue Warne and Donald Squires
Ms. Brenda Waters
Watertown Dental
Ms. Lisa Watkins
Peter and Emily Webster
Henry and Elisabeth Weil
Mr. Adam Weiner
Robert Weinstein and
Elizabeth Ginsburg
Mr. Steven Weisfeldt
Wellington Management
Company LLP
Ms. Christine Wennersten
Ms. Wendy Weppner
Westfield High School
Ms. Michelle Pol Wetlaufer
Ms. Susan Wheaton
Ms. Heather-Jean Wheeler
Ross and Vera Whistler
Joel and Nancy Whitcomb
Richard White and Margaret
Killay-White
Ms. Jane Whitehead
David Whiteman
Ms. Melanie Whycott
Walter and Catherine Wienczek
Mr. Henry Wiggin
Miss Nancy Willets
Mr. and Mrs. James Willing
Mr. Hunter Willis
Ms. Mary Willis
Mr. David Wilson
David and Stephanie Wilson
E. David Wilson
Kaj Wilson
Anthony and Courtney Winter
Ms. Monika Wirtz
Ms. Marsha Wiseheart
Ms. Lisa Wisniewski
Ms. Sara Withington
Ms. Cheryl Witkowski
Ms. Betty Wolfe

Women of the Moose
Ms. Kathiann Wood
Stewart and Priscilla Wood
Edwin and Jeanne Woods
Ms. Diane Lord Woodward
Woof Walkers
Wesley and Sharon Wratford
Curtis and Linda Wright
Ms. Greta Wright
Kenneth and Bebe Wunderlich
Mr. Jonathan Wysocki
Ms. Mary Yacovone
The Yankee Heritage Tole Chapter of
New England
B. Yanow
Ms. Joanne Yates
Ms. Maria Yelle
Ms. Holly Young
Ms. Liz Young
Simon and Paula Young
Patricia Conway Yozell and
Steve Yozell
The Yukon Fund
James and Janice Zafarana
Daniel and Leslie Zenga
Donna Zimbaldi
Barry and Patricia Zlotin
Steven and Vicki Zurowski

NEVINS FARM CAPITAL CAMPAIGN

The following is a list of gifts and commitments to the capital campaign for the MSPCA at Nevins Farm in Methuen.
For more information, contact, Kathleen Santry, 350 South Huntington Avenue, Boston, MA 02130 617 541-5075 ksantry@mspca.org

\$1,000,000 AND HIGHER

George and Constance Noble

\$500,000 - \$999,999

The Bafflin Foundation

\$250,000 - \$499,999

Carlee Charitable Trust
Estate of Cynthia Lampros Hastings
Ronald R. Kimball and
Eleanor Kimball
Dianne T. and John R. Pingree

\$100,000 - \$249,999

Anonymous (1)
Wendy and Jonathan Derby
Martha Morse Foundation
The Stevens Foundations
Shirley Shattuck Windsor
Charitable Trust

\$50,000 - \$99,999

Susanna Colloredo-Mansfield
Mr. and Mrs. James N. Esdaile, Jr.
Karl and Joyce Gladstone Foundation
Highland Street Connection
Mr. and Mrs. Ellice McDonald, Jr., CBE
Donna and David McGrath
The Ornell Family
The Rogers Family Foundation
Susan and Alan Tuck

\$10,000 - \$49,999

Estate of Evelyn Axelrod
Steve Bloom and Calli Towne
Timothy and Laura Bryan
Mr. and Mrs. Robert S. Cummings
Steven and Anne Dodge
Foundation M
Ruth and Christopher Lawler
Barbara W. and Robert W. Macleod
Maria and Wayne Maggio
Massbank Charitable Foundation
Mr. Joseph A. Muller
Susanne C. and Charles R. Richey
Mrs. Evelyn C. Schwager
Ms. Elizabeth Speert
Mr. and Mrs. Gilbert L. Steward, Jr.

BOSTON CAPITAL CAMPAIGN

The following is a list of gifts and commitments to the capital campaign for the Clinical Center at Angell Animal Medical Center and the MSPCA Animal Care and Adoption Center. For more information, contact, Kathleen Santry, 350 South Huntington Avenue, Boston, MA 02130 617 541-5075 ksantry@mspca.org

\$3,000,000 AND HIGHER

Dr. Frank Stanton

\$2,000,000 AND HIGHER

Copeland Foundation

\$1,000,000 AND HIGHER

Anonymous (2)
Mrs. Brewster Sewall
Tyco International (US) Inc.

\$500,000 - \$999,999

Peter and Constance Lacaillade
Kenneth and Lorraine Levine
Mary W. Nordblum

\$250,000 - \$499,999

Anonymous (1)
Estate of George P. Clark
Mr. and Mrs. Charles K. Gifford
Mr. and Mrs. Murray Gross
Mr. John Hitchcock
Ms. Carol S. Parks
James and Barbara Schaye

\$150,000 - \$249,999

Anonymous (2)
Mr. Robert L. Beal
Charles Engelhard Foundation
Mr. and Mrs. Selwyn A. Kudisch
The New York Community Trust

\$100,000 - \$149,999

Anonymous
Julia and Ron Druker
FleetBoston Financial Foundation
Deborah M. Karff
Eileen McDonagh and Robert Davoli
John J. Fish, Suffolk Construction
Co., Inc.

\$50,000 - \$99,999

Anonymous (2)
Estate of Maisie Cantini
Mr. Alphonse P. Chiappisi
Jonathan and Wendy Derby
Estate of Eleanore F. Eldredge
Farrington Charitable
Remainder Trust
Ms. Martha Mugar
Robb Charitable Trust
Sawyer Charitable Foundation
Estate of Bernice W. Whitcomb
Estate of Hulbert I. Wit
Jeffrey and Marla Wolk

\$10,000 - \$49,999

Anonymous (2)
Graham T. and Elisabeth Allison
Mrs. Edward L. Bond
Mr. and Mrs. John Carberry
J. William Codinha and Carolyn
Thayer Ross
J. Robert and Diane Coleman, Jr.
Andrew and Nicola Combes
Mrs. Marion Covich
Mr. and Mrs. Robert S. Cummings
Frederick and Jane Jamieson
Kahn Charitable Foundation
Katz Family Foundation
Mr. Stephen Kay
Carter Luke and Penny Schiller
William and Rebecca Manley
Ms. Stacy McManus
McMullen Family Foundation
Peter and Sarah Monaco
Harold and Frances Pratt

Mrs. Dwight Robinson, Jr.
Mrs. Edith L. Sacco
Donald Saunders and Liv Ullman
Singing Field Foundation, Inc.
James M. Stoneman Charitable Fund
The Taubman Company
Mary Lou Turgeon and Richard
Mordaunt
The Irving and Edyth S. Usen Family
Charitable Foundation
Donald and Susan Ware
Dr. Joan Zofnass

GEORGE T. ANGELL CIRCLE OF FRIENDS

By considering the future needs of animals in their estate and resource management plans, members of the George T. Angell Circle of Friends help ensure that the MSPCA can continue its work into the new century.
Anonymous (1)
Frederick and Barbara Alden
Scott and Cathy Ames
Miss Helen Anders
Mr. and Mrs. Louis Arvin
Ms. Debra Ashton
Ms. Lillian Austin
Ms. Bobbi Baker
Mr. Charles Balkin III
Alan and Maureen Balter
Ms. Roberta Barufaldi
Ms. Patricia Beckerle
Ms. Jane Beckwith
Ms. Harriet Begelfer
Helen Bellows
Mr. and Mrs. James Bellwood
Edward and Geraldine Bennett
Daniel and Kathleen Berkowitz
Ms. Elaine Birkholz
Mrs. Aurolyn Boda
Ms. Hannah Bodkins
Dr. Carol Boerner
Ms. Anne Booth
John J. Bowen

Ms. Beverly Brewer
Mrs. A. Brodie
Shirlee Burd
Mr. Henry Burnham
Ms. Martha Byington
Mr. and Mrs. Albert Cabral
Ms. Emily Caronia
Mr. and Mrs. Robert S. Carroll
Ms. Christine Carter
Karl and Janice Cederholm
Edward and Kathleen Chichester, Jr.
Ruth Christopher and
Michael Vozzella
Ms. Barbara Clapp
Mrs. Gwenn Cohen
Mr. and Mrs. John Coleman
Mrs. Gladys Copeland
Ms. Jackie Courtney
Ms. Judy Courtney
Mr. Martin Couture
Mrs. Gladyce D'Agostino
Mrs. Robert Davison
Mr. Raymond Denis
Karl and Elenore Deubert
Ms. Ruth Dingee
Mr. Joseph DiStefano
John and Esther Dolan
Ms. Virginia Doris
Miss Louise Doyle
Dr. Reed Drews and Dr. Lisa Lezzoni
Ms. Norine Dunlea
Ms. Anne Eberle
James and Sandra Eldridge
Carl Eschelbach and Theodora
Thayer-Eschelbach
Mr. Robert Estes, Jr.
Mrs. Florence Fabrizio
Ann and Bernice Factor
William and Joy Fagan
Ms. Jean Fazio
Ms. Ethel Feri
Mrs. Sally Fickel
John and Wenda Field
Mr. Robert Fitzgerald

Dana and Sue Fowle
Mr. Frederick Fox
W. Arthur and Lorraine Gagne, Jr.
Ms. Ann Gallo
Mr. Jason Garber
Ms. Mary Gardiner
Ms. Elizabeth Gell
Ms. Ilene Getz
Mrs. Pauline Gherson
Ms. Elgie Ginsburgh
Ms. Ruth Giusti
Gail Gold and Larry Loew
Ms. Denise Goldstein
Dr. Merrill Goldwyn
Ms. Catherine Gonsalves
Ms. Susan Goodwin
Ms. Gloria Gray
Peter and Ellen Gray
Mr. and Mrs. Murray Gross
Mark and Heidi Gudaitis
Mrs. Bertram Hardy
Mrs. Gloria Hardy
Ms. Mary Hayes
William and Patricia Hayes, Jr.
Mrs. Mercedes Hersom
Mr. Crosby Hitchcock
Ms. Mary Hooker
Ms. Amanda Hopkins
Stewart and R. Harriet Hopkins
Ms. Joanne Huber
Joseph and Phyllis Hyman
Mr. Everett Jodrey
Mr. Frank Jones, Jr.
Ms. Maxine Jones
J. B. Jones and Rachel Sachs Jones
Mr. Owen Judge
Ms. Deb Kermensky
Ronald Kimball
Karen Kimler
Ms Diane Kjeldsen
Mrs. Laura Klein Plunkett
Mr. and Mrs. Selwyn A. Kudisch
Edmund and Lynne Kuh
Mrs. Barbara Lawson

Ms. Suzanne Leblanc
Scott and Tamara Leclerc
Ms Carol Leduc
Ms. Sandra Lee
Ms. Carol Lennon-Longley
Ms. Jean Leone
Ms. Candyce LePage
Mr. William Leveille, Jr.
Mr. Ed Lowry
Carter Luke and Penny Schiller
Miss Sylvia Lunt
Ms. Jennifer MacDonald-Paleski
Charles and Mary Magriel
Ms. Ruth Mandalian
Mr. Robert Massey, Jr.
Ms. Deborah Matthews
Richard and Debbie McKown
Ms. Linda McLatchie
Mrs. Philip McLaughlin
Erik and Hannah Mollo-Christensen
Ms. Kayren Morrill
Ms. Jane Murphy
Gilbert and Lynne Osborn
Mrs. Ronald Ostergard
Ms. Shelia Owen
Mr. Rodney Palmer
Patricia Parks
Mr. Ron Peredna
Stanley and Loretta Pessok
Mrs. Margaret Petracone
Sylvia Petterson, M.D.
Mr. and Mrs. John Pingree
Ms. Lilla Pond
Ms. Brenda Powell
Ms. Victoria Puglisi
Albert and Karen Pytka
Marian and Martin Rees
Mr. and Mrs. Joseph Renton
Leonard and Gail Rosenthal
Mr. and Mrs. Norman Rottenberg
Ms. Barbara Sack
Mr. and Mrs. Ralph Sarni
Scott and Michelle Saunders
Mrs. Frances Scheckter

Mrs. Robert Schwab
Ms. Mary Seman
John and Patricia Sherman
Dr. Richard Shiff
Sandi and Joel Shriberg
Mr. and Mrs. Edward Smith, Jr.
Ms. Eugenie Sotiropoulos-Foss
Ms. Shirley Spas
Miss Barbara Spencer
Jim and Terri Spevock
Miss Margaret Stickell
Ms. Rebecca Stickney
Mr. and Mrs. John Strong
Mr. Jonathan Swan
Ms. Barbara Thomas
Miss Lenore Thornton
Ms. Rebecca Tornblom
Mrs. Denis Tottenham
Ms. Susan Tracy
Ms. Nan Tull-Wezniak
Ms. Jacqui Turin
Ms. Cynthia Valentine
Mrs. Jeanne Wadleigh
Ms. Mabel Waggett
David Waryas and Pamela
John-Waryas
Mr. Robert Webber
Mr. David Welch
Ms. Nancy Whitman
Mrs. Doris Willar
Ms. Anne Sears Wilson
Barry and Brenda Winston
Jack Wolper, M.D.
Miss Nancy Wright
Kenneth and Bebe Wunderlich
Mr. Max Wurf
Dr. Joan Wuterich

THE REVEREND DR. FRANCIS H. ROWLEY SOCIETY
The Reverend Dr. Francis H. Rowley Society has been founded to honor both the esteemed Dr. Rowley and those individuals who choose to support the mission of the MSPCA-Angell Western New England in their estate plans. Friends and supporters who have stepped forward as founding members to the Society are:
Anonymous (20)
Hatim and Marianne Abuselmi
Mary Louise W. Almeida
Helen D. Anders
Harriet A. Aspden
Robert and Barbara Carroll
Patricia Connor
Brenda Forbes
Ted and Barbara Hebert
Robert and Georgeanna Jeffreys
Virginia F. Keith
Helen Mary Kowal
Barbara Lawson
Ina and Candyce LePage
Nancy Lonczak
Lisa McCune-Leduc
Irene McGourty
Rodney F. Palmer
Judith Plotkin-Goldberg
Frances L. Scheckter
Audrey Schubach
Linda Skole
Barbara Spencer
John and Louise Strong

ANGELL ALUMNI FUND
Begun in 1940, the veterinary internship program at Angell Animal Medical Center was the first of its kind in the nation. It continues to be among the best and most prestigious post-graduate clinical veterinary training programs in the world. An active alumni association helps support the internship program through generous gifts from the following members:
Drs. Ken Abrams and Kathleen Pointek
Dr. Robert Arrick
Dr. Kathy A. Beck
Dr. Timothy Becker
Dr. Jerry Berg
Dr. Michael Bernstein
Dr. Kiko Bracker
Dr. Clare L. Bromley
Dr. Douglas Brum
Dr. Gary M. Bryan
Dr. Leslie P. Bullock
Dr. Armando Burgos
Dr. Raymond Cahill-Morasco
Dr. Maureen C. Carroll
Dr. Elizabeth J. Chittick
Dr. Susan Cotter and Dr. Richard Seder
Dr. Carol J. Curry
Dr. Erika dePapp
Dr. Richard A. DeVries and Dr. Nina Cairns
Dr. Lynn Dgetluck
Dr. Julie Dinnage
Dr. Roy Dornfeld
Dr. Sharon Drellich
Dr. Patricia Ewing
Dr. Jeffrey Feinman
Dr. Christine Fiorello
Drs. Jeffrey and Barbara French
Dr. Jack G. Gallagher

Dr. Erin S. Geshwiler
Dr. Kenneth M. Goddard
Dr. Robert C. Griffiths
Dr. Jean Hall
Dr. Neil K. Harpster
Dr. Lori Hartzband
Dr. Robin Holsinger
Dr. Walter I. Horne
Dr. Ralph Henry Hunt
Dr. Paul Husted
Dr. Stephanie B. James
Dr. Kathleen Kanjer
Dr. Joel Kaye
Dr. Andrew S. Kestler
Dr. Minta Lee Keyes
Dr. Julie Kopsler
Dr. Robert G. Kyrka
Dr. Nancy Laste
Dr. Stephen Lavidor
Dr. Edward B. Leeds
Dr. Robert Lewis
Drs. Reed Drews and Lisa Lezzoni
Dr. William V. Lumb
Dr. Dana R. MacNamee
Dr. Ann Marie Manning
Dr. Thomas McGrath
Dr. Ladan Mohammad-Zadeh
Dr. Lisa Moses
Dr. Robert Murtaugh
Dr. Robert A. Nizlek
Dr. Nicholas Palumbo
Dr. John Parks
Dr. Michael Pavletic
Dr. Louis B. Pieper
Dr. Catherine J. Reese
Dr. Joan Regan
Dr. Richard M. Roberts
Dr. Linda Robinette
Dr. Rebecca Rose
Dr. William Rosenblad and Dr. Maria Vandis
Dr. James N. Ross
Dr. Marvin Rothman
Dr. Roger A. Rowley

Dr. Debbie Sue Ruelhmann
Dr. Stephen Russell
Dr. Scott Schelling
Dr. Robert G. Shering
Dr. Lawrence Shinnaman
Dr. Sandra Silva-Arrieta
Dr. Suzanne Starr
Dr. Ruth Barlow Strong
Dr. Margaret S. Swartout
Dr. Irene Takata
Dr. Theresa G. Taylor
Dr. George Scott Teague
Dr. Peter Theran
Dr. Gus W. Thornton
Dr. Stanley Truffini
Dr. Michelle Maria Turek
Dr. Matthew Van Zwieten
Dr. Jesse A. Webster
Dr. Stuart E. Wiles
Dr. John E. Willson
Dr. Sherri Wilson
Dr. Kathryn Wirth
Dr. Miles M. Yoshioka

MATCHING GIFT COMPANIES

4Charity Foundation, Inc.
Aetna Foundation, Inc.
Aetna Giving Campaign
Ameriprise Financial
Aspect, Inc.
AT & T
Babson Capital Management LLC
Bank of America
The Baupost Group LLC
Becton Dickinson Foundation
The Capital Group Companies, Inc.
Chubb & Son
Cingular Wireless
Citizens Financial Group, Inc.
Computer Associates
International, Inc.
Eastern Bank Charitable Foundation
Eaton Vance Management, Inc.
Fannie Mae Foundation
Fiduciary Trust Company
FleetBoston Financial Foundation
FM Global Foundation
G.E. Foundation
The Gillette Company
Gorton's, Inc.
Grantham, Mayo, Van Otterloo
& Company
John Hancock Financial Services, Inc.
Hewlett-Packard
IDC Research, Inc.
International Data Group
Massachusetts Mutual Life
Insurance Co.
MassDevelopment
MassMutual Financial Group
MFS Investment Management
Microsoft
Millipore Foundation
J.P. Morgan Chase Foundation
National Grid USA Service
Company, Inc.
NSTAR
Oracle

Pioneer Investments
The Plymouth Rock Foundation
Prudential Foundation
Reebok International Ltd.
SAP
Serono Inc.
The St. Paul Companies, Inc.
Sun Life Assurance Company
of Canada
The Sun Microsystems Foundation, Inc.
TurboCare, Inc.
Verizon Foundation
Wachovia Corporation
Waters Corporation
Wellington Management Company LLP
The Whitaker Foundation
Wilmer Cutler Pickering Hale and
Dorr LLP
World Reach, Inc.

THE TWENTY-FIRST CENTURY FUND ENDOWMENTS

The Twenty-First Century Fund is collection of individual endowments created to support the programs and activities of the MSPCA and to ensure its future. Donors may name their fund as a lasting tribute to a special person or animal, designate that resources be used for a specific purpose or link their own name in perpetuity to the work of the MSPCA. A named-endowment fund can be established with an outright gift, planned gift or bequest.

BOND FAMILY ENDOWMENT FUND (2001)

Established by Whitford S. Bond and his late mother, Virginia Q. Bond, for general support to recognize the commitment and service of their family to the MSPCA, which spans three generations.
Mrs. Edward L. Bond
Ms. Laura Q. Bond
Mr. Whitford S. Bond
John J. Bowen
Martin Berman and Mary Ann Jasienowski
Dr. Gus W. Thornton

PAPPY BOTTA PET CARE ASSISTANCE FUND (1999)

Established by Frank and Jean Botta to support pet care assistance at Angell Animal Medical Center in Boston.
Mr. and Mrs. Frank Botta

CANCER CARE APPRECIATION FUND OF THE PET CARE ASSISTANCE FUND (2001)

Established by Stacy McManus for care of cancer patients through the Pet Care Assistance Fund.
Ms. Stacy McManus

PATRICIA AND STEVEN COHEN LAW ENFORCEMENT FUND (1998)

Established by the late Steven J. Cohen to support the medical care of ill animals that are in the custody of the MSPCA Law Enforcement Department.
Mr. Steven J. Cohen

EDWARD HYDE COX TRUST (1985)

Established by the Trustees of The Edward Hyde Cox Trust 1985 to fund the Edward Hyde Cox medal which recognizes someone whose work in literature, journalism or the arts has made a significant positive difference for animals; also for general support of the MSPCA.
The Edward Hyde Cox Trust 1985

EASTERN DOG CLUB INTERN ENDOWMENT/SPONSORSHIP FUND (2002)

Established in 2002 by the Eastern Dog Club to support the Intern Program at Angell Animal Medical Center.
Eastern Dog Club

ROBERT AND LORETTA GALE SCHOLARSHIP FUND (2000)

Established by the daughter of Robert and Loretta Gale to support the Internship Program at Angell Animal Medical Center in Boston.
Dr. Joan Wuterich

LILLIAN HARVEY AND JAMES J. HARVEY ANIMAL CARE FUND (2003)

Established by the late Lillian Harvey to provide support for feeding and loving care of animals.
Lillian Hirst Harvey

COLEMAN FAMILY ENDOWMENT FUND (2004)

Established by J. Robert Coleman, Jr. as an endowment component of The Boston Project to support the operating expenses related to the work of the Society.
J. Robert Coleman, Jr.

MARILYN R. KUDISCH ENDOWMENT TO BENEFIT THE MSPCA BOSTON ANIMAL CARE AND ADOPTION CENTER (1999)

Established by MSPCA overseer Marilyn R. Kudisch to support the operating expenses related to the programs of the MSPCA Animal Care and Adoption Center in Boston.
John J. Bowen
Ms. Nancy S. Capone
Combined Jewish Philanthropies
Dr. Julie Dinnage
Ms. Patricia Dooley
Ms. Elizabeth Gardner
The Happy Dog Companies
Ms. Kathleen D. Kemper
Mr. and Mrs. Selwyn A. Kudisch
Mr. Peter G. Levine
Ms. Mariam Logna
Mr. and Mrs. Albert Savitsky
Ms. Hannah Sommerstein
Mr. Timothy D. Skelly
Ms. Marjorie A. West

THE SELWYN A. AND MARILYN R. KUDISCH PET CARE ASSISTANCE FUND (1997)

Established by MSPCA overseers Marilyn R. and Selwyn Kudisch to support pet care assistance at Angell Animal Medical Center in Boston.
Ms. Deborah Blackmore Abrams
John J. Bowen
Combined Jewish Philanthropies
Mr. and Mrs. Robert S. Cummings
Ms. Lucinda DePatto
Mr. and Mrs. Selwyn A. Kudisch
Carter Luke and Penny Schiller
Mr. and Mrs. Albert Savitsky
Ms. Beth Shapiro
Mr. Timothy D. Skelly
Mr. James Stacey
Ms. Joan A. Stark
Dr. Gus W. Thornton

JACK MANLEY MEMORIAL FUND (2000)

Established by William and Rebecca Manley for general support.
Mr. and Mrs. William Manley

SANFORD VON H. OLSON ENDOWMENT FUND AT ANGELL ANIMAL MEDICAL CENTER (2000)

Established by colleagues of Sanford von H. Olson, on the occasion of his retirement, to support the Internship Program at Angell Animal Medical Center in Boston.
Mr. and Mrs. Al Boss
Mr. and Mrs. John Bursett
Mr. John Cass
Ms. Roanne Dunbar
Mr. and Mrs. John Fay
Ms. Catherine Hillerbrand
Mr. and Mrs. Richard Jancke
Dr. and Mrs. Sanford von H. Olson
Seattle Veterinary Associates
Mr. and Mrs. Jim Spooner
Colonel Marilyn J. Sylvester
Ms. Vicky Taylor

CATHERINE DEWS POTTER INTERNATIONAL FUND FOR ANIMALS (2001)

Established by Catherine Dews Potter to benefit the international programs of the MSPCA.
Ms. Catherine Dews Potter

MARIE PAPPALARDO – MARIA KOUTNY ANIMAL ASSISTANCE FUND

Established by Maria Koutny in honor of her mother Marie Pappalardo, a victim of the 9/11/01 terrorist attacks, to be used to benefit animals at the Methuen MSPCA facilities.
Maria Koutny
Dana Willeke

SHORTEN-BELL MEMORIAL FUND (2001)

Established by Elizabeth May Bell, for general support, in honor of her family, including her parents, William A. and Eileen Shorten, her brother, Robert W. Shorten, her husband, Dr. James A. Bell, and herself.
Ms. Elizabeth M. Bell

FOXO STANTON-ALLISON FUND FOR THE BENEFIT OF THE PET CARE ASSISTANCE FUND AT ANGELL ANIMAL MEDICAL CENTER IN BOSTON (1997)

Established by Dr. Frank Stanton to support pet care assistance at Angell Animal Medical Center.
Dr. Frank Stanton

MARIETTA FLOOD THORNTON INTERN ENDOWMENT FUND (1998)

Established by the Angell Alumni Association in memory of Marietta Flood Thornton to support the Intern Program at Angell Animal Medical Center.
Dr. Ken Abrams, Veterinary Ophthalmology Services, Inc.
Dr. Duane T. Albrecht
Dr. Kenneth Arceneaux
Mr. and Mrs. George Ballantyne
Dr. Michael Bernstein
John J. Bowen
Dr. Dawn T. Brooks
Dr. James Carpenter
Dr. Maureen C. Carroll
Mr. and Mrs. Robert S. Cummings
Joseph and Barbara Davin
Dr. Richard Devries
J. and Shirley Fennel
Dr. Christine Fiorello
Mrs. Catherine Flood
Mr. and Mrs. Jeffrey French
Dr. and Mrs. Paul Gambardella
Mr. Greg Gilmore
Dr. Robert C. Griffiths

Dr. Robin Holtsinger
Dr. Walter I. Horne
Dr. Ralph Henry Hunt
Dr. Paul Husted
Dr. James M. Johnson
Dr. Peter C. Kennedy
Mr. Charles Kenny
Dr. David W. Knapp
Mr. and Mrs. George B. Langevin
Dr. Justine Lee
Dr. Edward B. Leeds
Mr. Stanley M. Lewis
Mrs. Josiah K. Lilly III
Dr. Barbara McGuire
Dr. Kirk P. Miller
Dr. Rhonda Moore
Dr. Lynn Morris and Mr. Eric Smith
Mr. Bruce Nickerson
Dr. Kenneth Odrzywolski
Dr. Lee Pater
Dr. John Parks
Dr. Lee Patel
F. H. Perry, Builder, Inc.
Dr. Louis B. Pieper, Jr.
Drs. Anne Radice and Iris Love
Dr. Catherine J. Reese
Dr. Wayne Renegar
Dr. Richard M. Roberts
Dr. and Mrs. James Ross
Dr. Scott Schilling
Ms. Helen Sellow
Dr. Meredith A. Simon
Ms. Greta B. Street
Dr. Irene Takata
David E. Thompson and Paul D. Thompson
Dr. Gus W. Thornton
Dr. Stanley Truffini
Dr. Jesse A. Webster

DR. MICHAEL BERNSTEIN INTERNSHIP ENDOWMENT FUND

Established by colleagues of Dr. Michael Bernstein in his honor to provide financial support for the Internship Program at Angell Animal Medical Center in Boston.
Drs. Ken Abrams and Kathleen Pointek
Ms. Lisa Allen
Dr. Robert Arrick
Dr. Florence Barton
Dr. Douglas Brum
Cambrian Animal Hospital
Drs. David and Jennifer Cook
Dr. David Dunn
Dr. Jack Gallagher
Dr. Paul Gambardella
Jean Hall and Stephen Callahan
Dr. Robin Holtsinger
Dr. Nancy Laste
Mr. Saul Palder
Dr. Louis Pieper
Dr. Catherine Reese
Dr. Joan Regan
Dr. Wayne Renegar
Dr. Richard M. Roberts
Dr. Lawrence Shinnamon
Dr. Gus W. Thornton
Dr. Alice M. Wolf
Dr. Edward Zullo

ELEANOR E. TOLLOW FUND (2001)

Established by Eleanor E. Tollow for general support.
Ms. Eleanor E. Tollow

JOSEPH H. WATERS FUND (2000)

Established by Joseph H. Waters in memory of his mother Kate I. Waters for general support.
Mr. Joseph H. Waters

EMILY ZOFNASS FUND (2000)

Established in memory of Emily Zofnass to benefit the Pet Care Assistance Fund.
Dr. Joan Zofnass

For more information about The Twenty-First Century Fund, please contact:
Kathleen Santry, MSPCA-Angell,
350 South Huntington Avenue,
Boston, MA 02130
617 541-5075
ksantry@mspca.org



TOP

Dermatologist Dr. Kathy Tater examines a patient.

Biscuit escaped the high waters of the Lowell flood in 2006 and found his forever home through the MSPCA.

The Angell Avian and Exotics department added to its staff of board-certified doctors in 2006 to care for the rarer breeds of pets such as this iguana.



Board Members

BOARD OF OVERSEERS

Arthur Altman
Barbara Arnold
Warren H. Arnold, III
George C. Ballantyne
Robert L. Beal
Ashley K. Beron
Katherine Breen
Jessica Gifford Busch
Martha Byington
William Codinha
Gwenn Cohen
Lindsay Cook
Julia Cox
Jane A. Cummings
Jonathan Derby
Anne Dodge
Louise Doyle
Reverend Michael E. Haynes
Jo-Edith Heffron
Cynthia Hinckley
Nancy F. Koehn
Robin Kenny
Marilyn Kudisch
Selwyn Kudisch
Constance Lacaillade
Mary Littleford
Wayne Maggio
Martha Mugar
Dr. David F. Muller
George Noble
Connie Noble
Susan Paley
John C. Pappas

Leslie F. Pappas
Heather Winship Reed
Stephen Rogers
Ralph Sarni
Marcia Sassoon
Barbara Schaye
James Schaye
Lyn Schwager
Abraham Shurland, M.D.
Elizabeth Shurland, D.V.M.
Lori Sidman
Linda Skole
John Walsh
Beth Webster

BOARD OF DIRECTORS

Robert S. Cummings, Esq., Chairman
Elisabeth Allison
Hillery Ballantyne
Whitford S. Bond
Gerard H. Brandi
John G. Carberry
Robert S. Carroll
J. Robert Coleman
Carter Luke
Robert W. Macleod
William Pepin
Dianne T. Pingree
Dana W. Ramish
Richard M. Roberts, D.V.M.
Carolyn Thayer Ross
John G. Stevenson

PRESIDENT EMERITUS

Gus W. Thornton, D.V.M.

Officers and Contact Information

OFFICERS

Carter Luke, CEO, MSPCA-Angell
Dana W. Ramish, President, Angell Animal Medical Centers
Alice Bruce, Vice President, Development
Kathleen K. Collins, Vice President, Human Resources
Bonnie Zeledon, Vice President, Marketing

CONTACT INFORMATION

MSPCA-Angell Administrative Offices
350 South Huntington Avenue, Boston, Massachusetts 02130
617 522-7400
www.mspca.org

ANGELL ANIMAL MEDICAL CENTERS

Angell Animal Medical Center – Boston
Appointments and Information 617 522-7282

Angell Animal Medical Center – Nantucket Island
Appointments and Information 508 228-1491

Angell Animal Medical Center – Western New England
Appointments and Information 413 785-1221

MSPCA ANIMAL CARE AND ADOPTION CENTERS

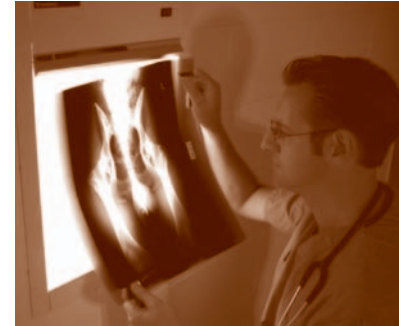
Boston 617 522-5055
Cape Cod 508 775-0940
Martha's Vineyard 508 627-8662
Metro South (Brockton) 508 586-2053
Nantucket 508 825-2287
Nevins Farm and Equine Center 978 687-7453
Western New England 413 736-2992

ADVOCACY

Legislative Issues 617 541-5008
Living With Wildlife 617 524-5632
Phinney's Friends 617 541-5105
Pets in Housing 617 541-5008
Spay/Neuter Assistance Program (SNAP) 617 541-5007
Development Donations 617 541-5075

MARKETING AND COMMUNICATIONS

Public Relations 617 541-5120
Web Site and Printed Publications 617 541-5107
Hillside Acre Animal Cemetery, Methuen 978 687-7453
The American Fondouk 617 541-5120
24-Hour Animal Cruelty Law Enforcement Hotline
Main 800 628-5808
Boston 617 522-6008
Western New England 413 781-3231



TOP
Dr. Denis Frappier continues to bring clinical care to Moroccans at the American Fondouk.
Dr. Nicholas Trout examines a patient's X-ray in Angell's Radiology department.
Chief Medical Officer, Dr. Ann Marie Manning, and her cat Birdie.



The mission of the **Massachusetts Society for the Prevention of Cruelty to Animals** is to protect animals, relieve their suffering, advance their health and welfare, prevent cruelty and work for a just and compassionate society.



Protecting and caring for 250,000 animals per year — more than any other humane society in the nation — the **MSPCA-Angell** owns and operates seven **MSPCA Animal Care and Adoption Centers** and three **Angell Animal Medical Centers** statewide. In addition to our renowned adoption and veterinary services, we are a world leader in humane education, community outreach, wildlife programs, humane law enforcement and animal advocacy protection.



Founded in 1868 by **George T. Angell** with 1,200 members in the Boston area, we have grown to more than 120,000 people from all 50 states and 27 countries who support our programs and use our services. We are a private, nonprofit 501(c)(3) organization and receive no government funding at all. We rely on the generosity of people who care deeply about helping animals.

